

# BENCH MARK

RELEASE II

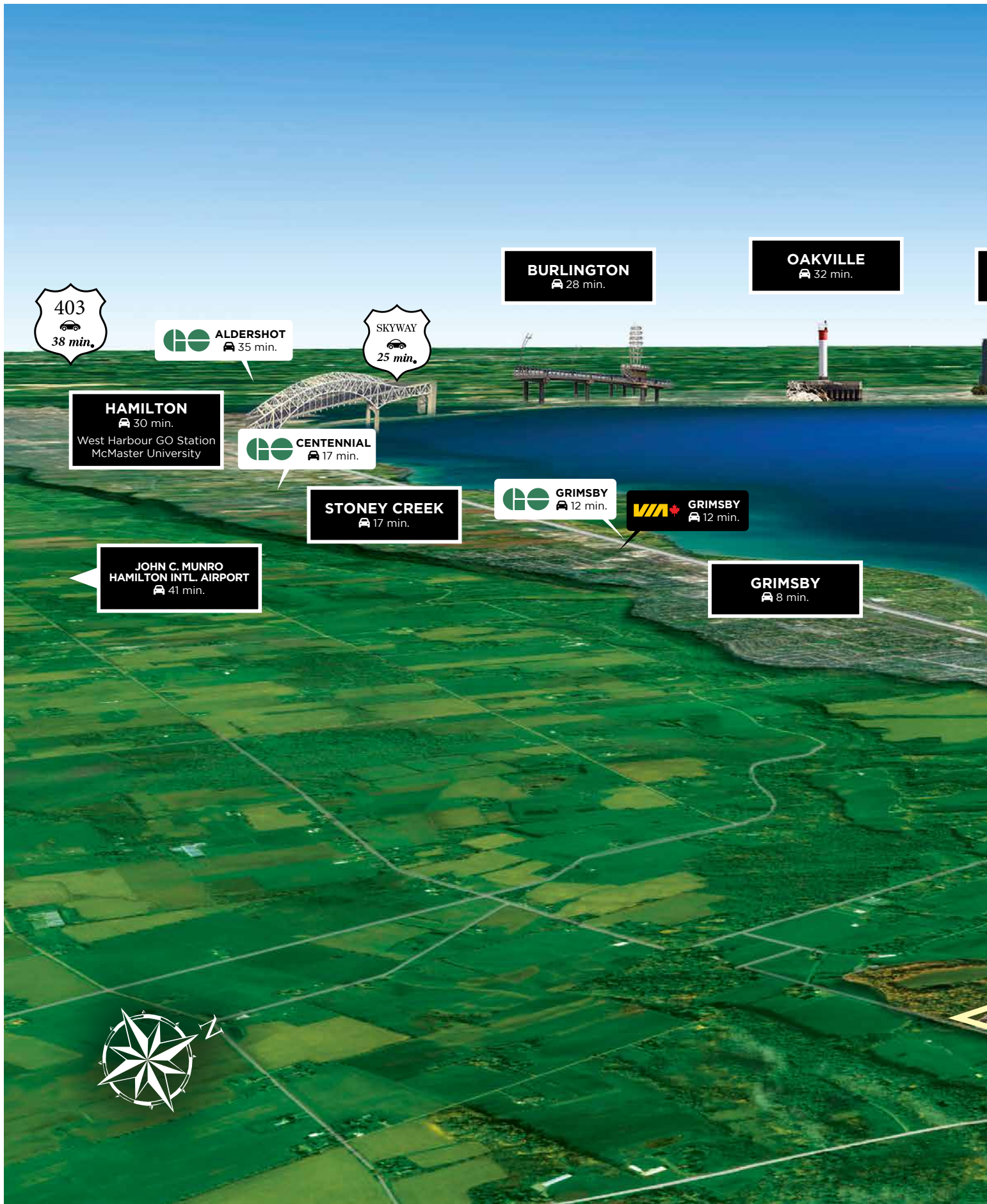


## PRODUCT BOOK

3 STOREY TOWNHOMES

LOSANI  
HOMES









**MISSISSAUGA**  
🚗 41 min.

**PEARSON  
INTL. AIRPORT**  
🚗 54 min.



**TORONTO**  
🚗 54 min.

**ST. CATHARINES**  
🚗 14 min.  
VIA Rail Station  
GO Station  
Brock University

**NIAGARA**  
🚗 24 min.  
Niagara Falls  
VIA Rail Station  
Niagara College  
Niagara Hospital



  
*Woodriew*

**KING ST.**

**BEAMSVILLE**  
🚗 1 min.

**ONTARIO ST.**

**BENCH  MARK**

**MOUNTAIN ST.**

**RAINBOW BRIDGE** 🚗 32 min.  
**PEACE BRIDGE** 🚗 43 min.  
**BUFFALO** 🚗 38 min.  
**BUFFALO AIRPORT** 🚗 1hr. 3 min.  
**PEACE BRIDGE** 🚗 43 min.

### 3-STOREY TOWNS










 15' ESPRIT END	 15' ESPRIT INTERIOR
 16' ESPRIT CUSTOM END	 18' ESPRIT CUSTOM END
 26' WALDORF END	 15' ESPRIT GRANDE END
 15' ESPRIT GRANDE INTERIOR	 16' ESPRIT GRANDE CUSTOM END
 18' WHITEHAVEN INTERIOR	 18' WHITEHAVEN END

### 2-STOREY TOWNS

 18' KNIGHTON END	 18' KNIGHTON CUSTOM END
 18' KNIGHTON INTERIOR	

This site plan generally depicts a draft plan submitted to the municipality for development approvals. All details, dimensions, adjacent land uses and features shown on this plan are intended to display the preliminary lot plan only. The lot and surrounding lots or other features shown on this plan such as driveway locations, sidewalks, grading, retaining walls, lot dimensions, fencing detail, and landscaping features are subject to approval by the municipality, the Vendors consulting engineers, and developer. Accordingly the lots, adjacent lots, and all such surrounding features shown on this plan are subject to change without notice and may differ.  
E. & O. E. July 2nd, 2025

### FEATURES

-  ENHANCED END
-  PROPOSED BIKE RACK
-  PROPOSED CHAIN LINK FENCE
-  PROPOSED RETAINING WALL
-  PROPOSED CANADA POSTBOX
-  PROPOSED WOODEN DECK
-  PROPOSED WOODEN FENCE
-  PROPOSED METAL FENCE
-  EXISTING WOODEN FENCE





FUTURE RELEASE

VISTA RIDGE VIBRANT

VISTA RIDGE VIBRANT

VISTA RIDGE VIBRANT

VISTA RIDGE VIBRANT

43

42

41

40

39

38

37

36

AMENITY SPACE

16

17

18

19

20

21

22

23

24

25

26

27

28

29

30

31

32

33

34

35

79

78

77

76

75

74

73

80

81

82

83

84

85

86

94

93

92

91

90

89

88

87

95

96

97

98

99

100

101

102

109

108

107

106

105

104

103

110

111

112

113

114

115

116

117

118

119

120

121

122

123

124

125

126

127

128

129

130

131

FUTURE RELEASE

N

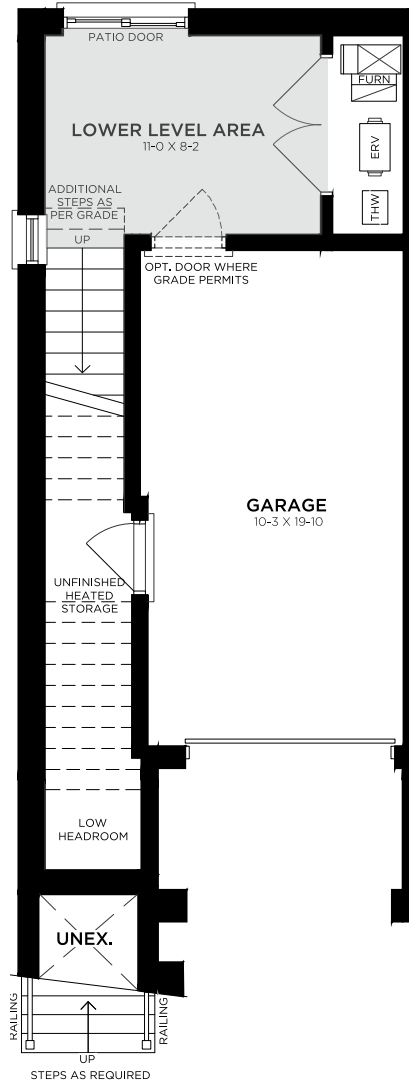
EXISTING RESIDENTIAL

# 15' ESPRIT

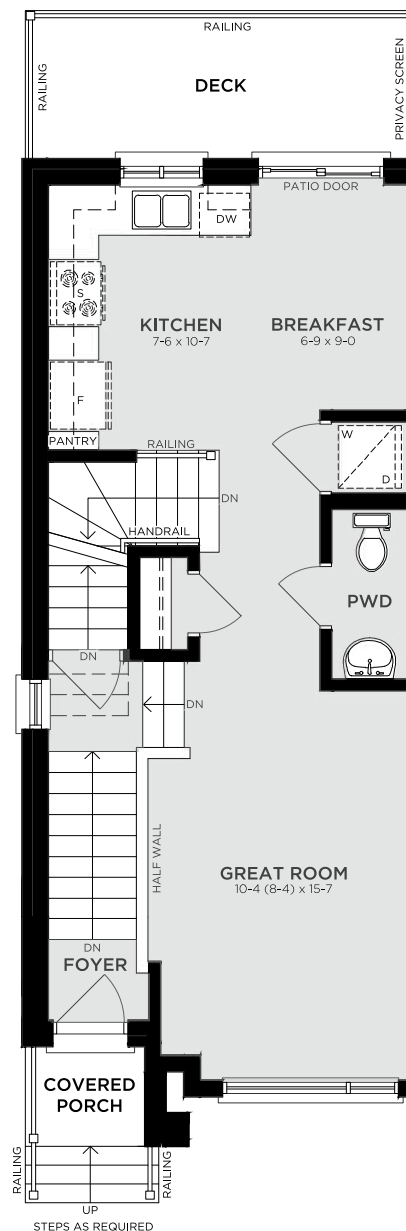
END UNITS &  
ENHANCED END UNITS

## END UNITS

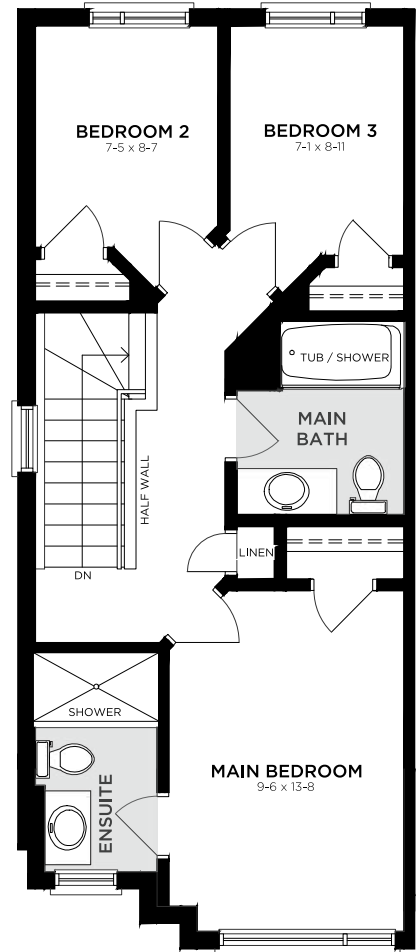
### GROUND FLOOR (G1)



### MAIN FLOOR (M1)



### SECOND FLOOR (S3)



<sup>8</sup>Please refer to page 23 for additional information and legal disclaimers. Actual usable floor space may vary from the stated floor area. Room dimensions shown in the Vendor's marketing materials are approximate and not warranted, as variations may arise due to site conditions, engineering, or structural requirements. Construction of Dwelling may not be as shown. Some features labelled "Optional" or "Opt" are available at an additional cost. Exterior renderings are artist's concept and are subject to architectural controls, material availability, applicable floor plans, and site conditions. Window placement on side and rear elevations may be altered or omitted due to side yard setbacks, rear grading, or other site constraints. All details, dimensions, finishes, features, fixtures and specifications are subject to change without notice at the discretion of the vendor, the municipality, the developer, or the vendor's control architect. Total square footage is

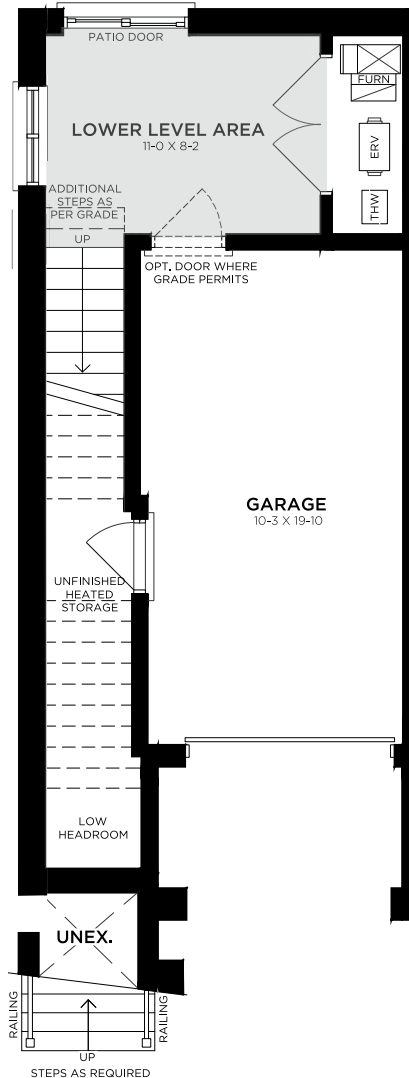
 3
  2.5  
 1,281 SQ. FT.

END F1 F2 F2 F1 END

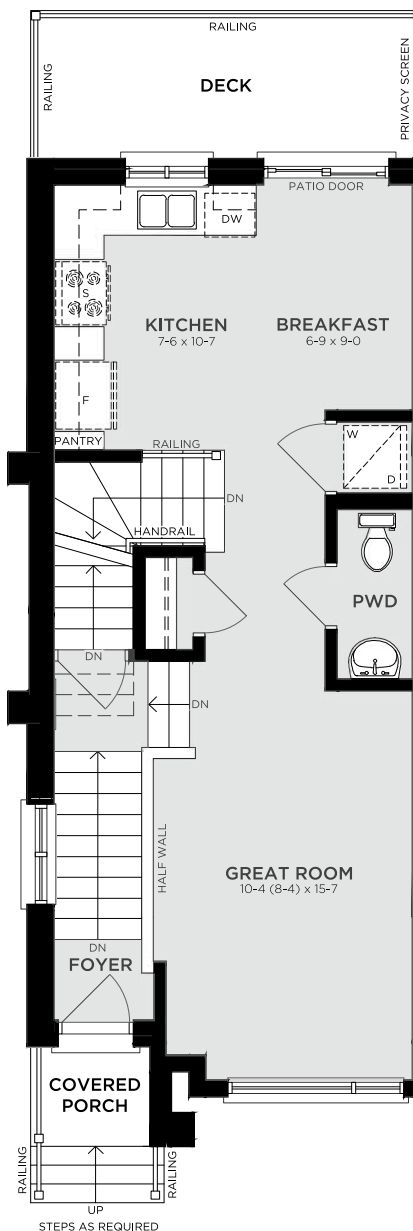


## ENHANCED END UNITS

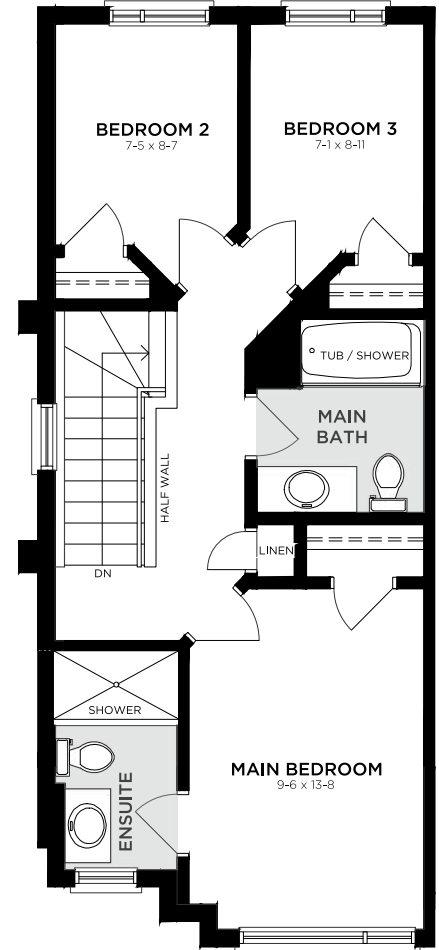
### GROUND FLOOR (G1)



### MAIN FLOOR (M1)



### SECOND FLOOR (S3)



warranted by the Vendor in accordance with the HCRA Directive 3 – Floor Area Calculations, dated February 1, 2021, and updated March 22, 2021 (formerly Tarion's Builder Bulletin 22). A tolerance of 2.0% on the total area measurement is acceptable. Garage area is excluded from the floor area calculation, while any finished, year-round habitable space above the garage is included. Features noted as "where grade permits" or "subject to grading" may not be feasible depending on the grading of the land. In some cases, this may require adjacent floor areas to be lowered by one riser, resulting in "sunken" areas. Product availability is constantly changing. Prices are accurate at the time of publishing and subject to change. Move in dates vary and may not be guaranteed in all circumstances. Free upgrade packages and included extras have no cash redemption value and may consist of pre-selected items. E. & O. E. August 27, 2025 12:22 PM.

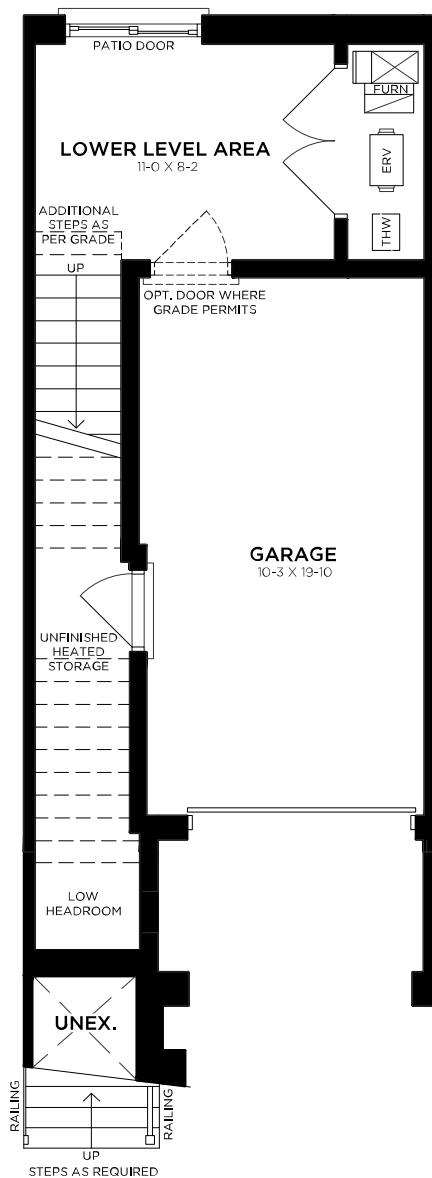
**LOSANI**  
 HOMES

# 15' ESPRIT

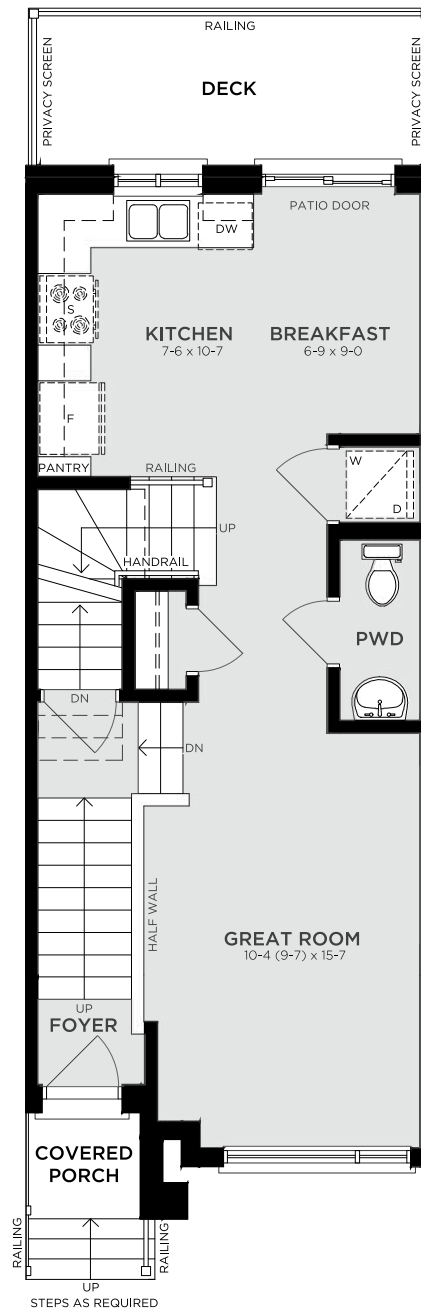
## INTERIOR UNITS

### ELEVATION F1

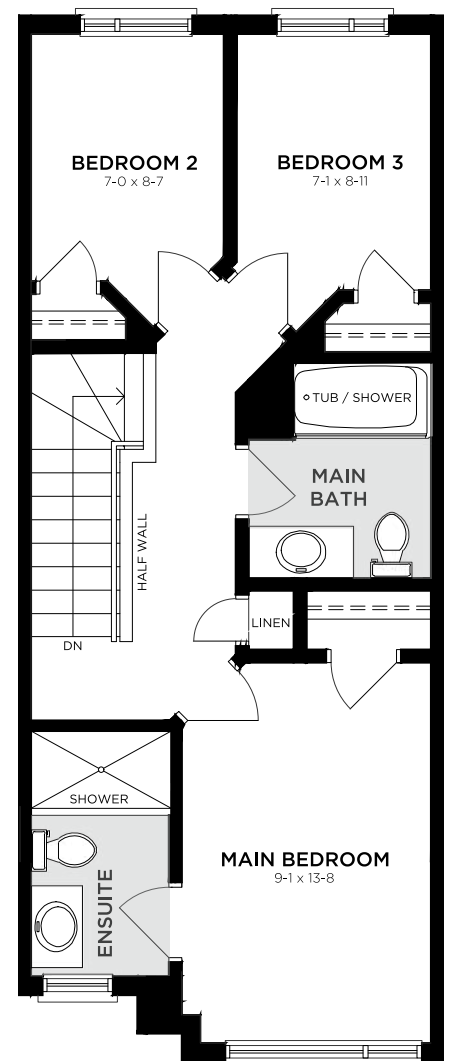
#### GROUND FLOOR (G1)



#### MAIN FLOOR (M1)



#### SECOND FLOOR (S3)



\*Please refer to page 23 for additional information and legal disclaimers. Actual usable floor space may vary from the stated floor area. Room dimensions shown in the Vendor's marketing materials are approximate and not warranted, as variations may arise due to site conditions, engineering, or structural requirements. Construction of Dwelling may not be as shown. Some features labelled "Optional" or "Opt" are available at an additional cost. Exterior renderings are artist's concept and are subject to architectural controls, material availability, applicable floor plans, and site conditions. Window placement on side and rear elevations may be altered or omitted due to side yard setbacks, rear grading, or other site constraints. All details, dimensions, finishes, features, fixtures and specifications are subject to change without notice at the discretion of the vendor, the municipality, the developer, or the vendor's control architect. Total square footage is



 3
  2.5

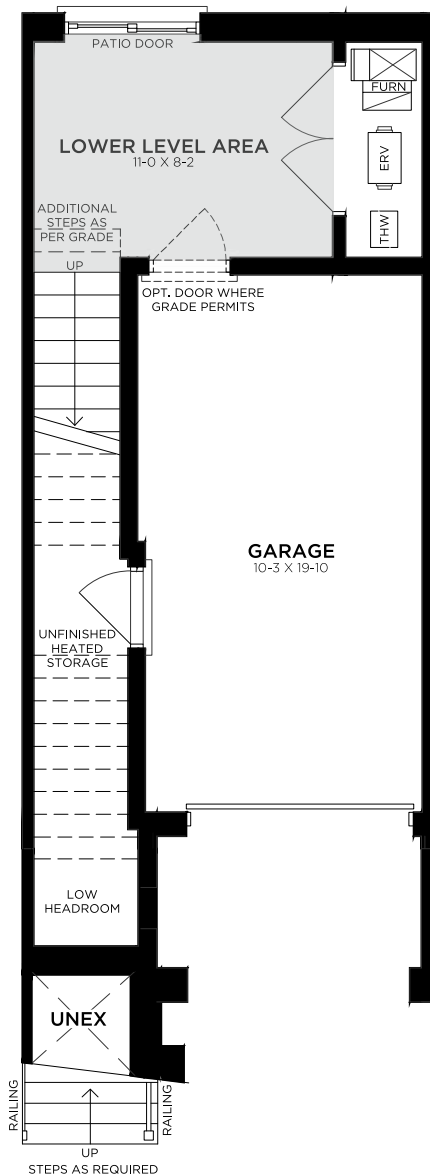
F1: 1,237 SQ. FT.

F2: 1,205 SQ. FT.

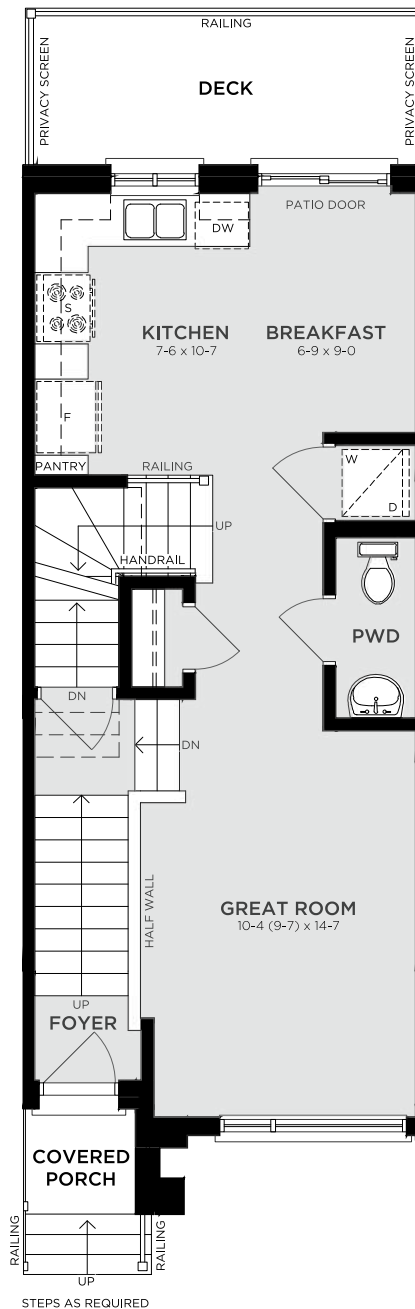
## ELEVATION F2



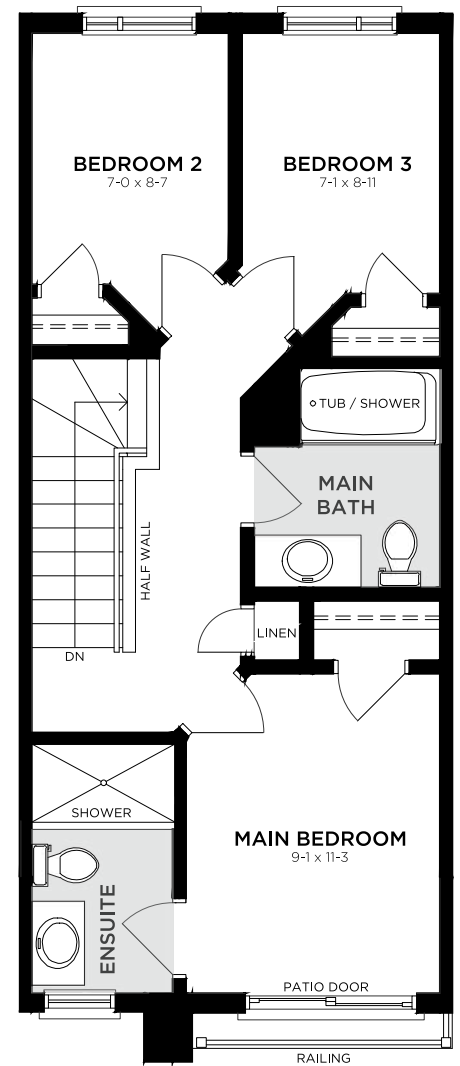
### GROUND FLOOR (G1)



### MAIN FLOOR (M1)



### SECOND FLOOR (S3)



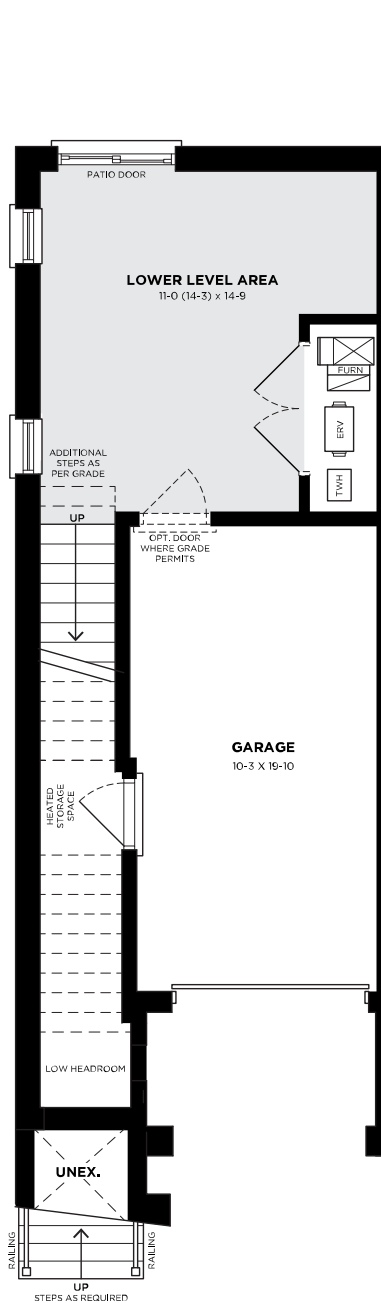
warranted by the Vendor in accordance with the HCRA Directive 3 – Floor Area Calculations, dated February 1, 2021, and updated March 22, 2021 (formerly Tarion's Builder Bulletin 22). A tolerance of 2.0% on the total area measurement is acceptable. Garage area is excluded from the floor area calculation, while any finished, year-round habitable space above the garage is included. Features noted as "where grade permits" or "subject to grading" may not be feasible depending on the grading of the land. In some cases, this may require adjacent floor areas to be lowered by one riser, resulting in "sunken" areas. Product availability is constantly changing. Prices are accurate at the time of publishing and subject to change. Move in dates vary and may not be guaranteed in all circumstances. Free upgrade packages and included extras have no cash redemption value and may consist of pre-selected items. E. & O. E. August 27, 2025 12:22 PM.

# 15' ESPRIT GRANDE

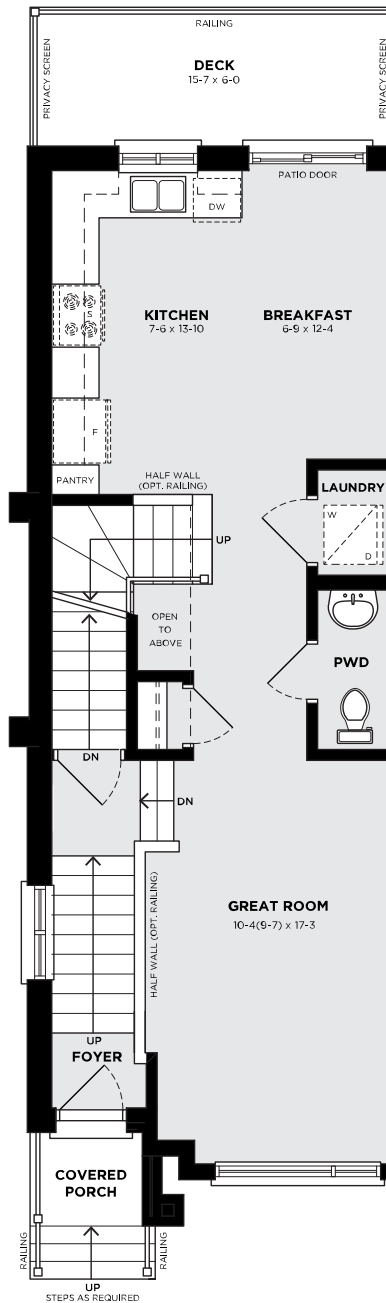
## ENHANCED END UNIT & INTERIOR UNIT

### ENHANCED END UNIT

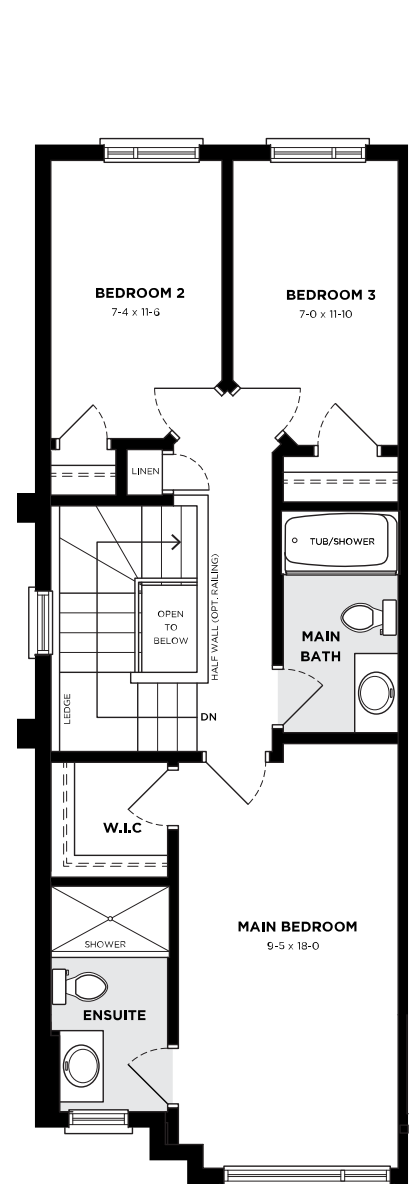
#### GROUND FLOOR (G1)



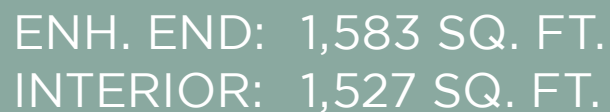
#### MAIN FLOOR (M1)



#### SECOND FLOOR (S3)

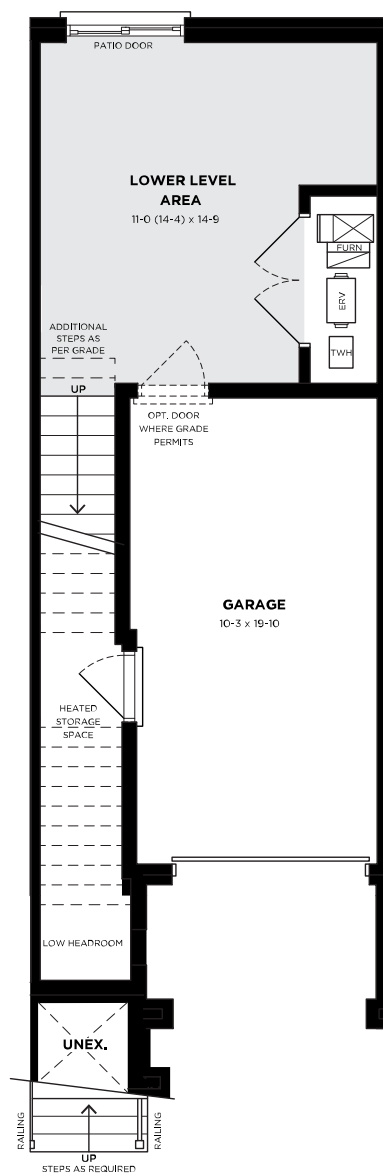




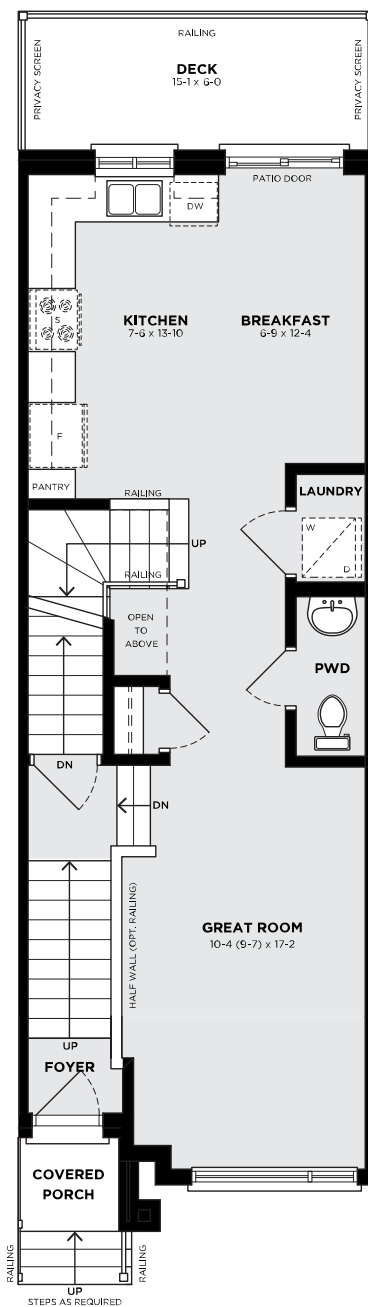


## ELEVATION F1

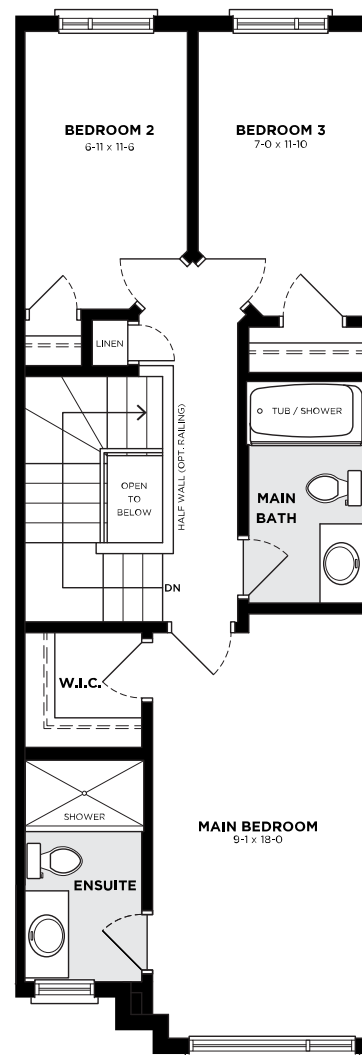
## GROUND FLOOR (G1)



## MAIN FLOOR (M1)



## SECOND FLOOR (S3)



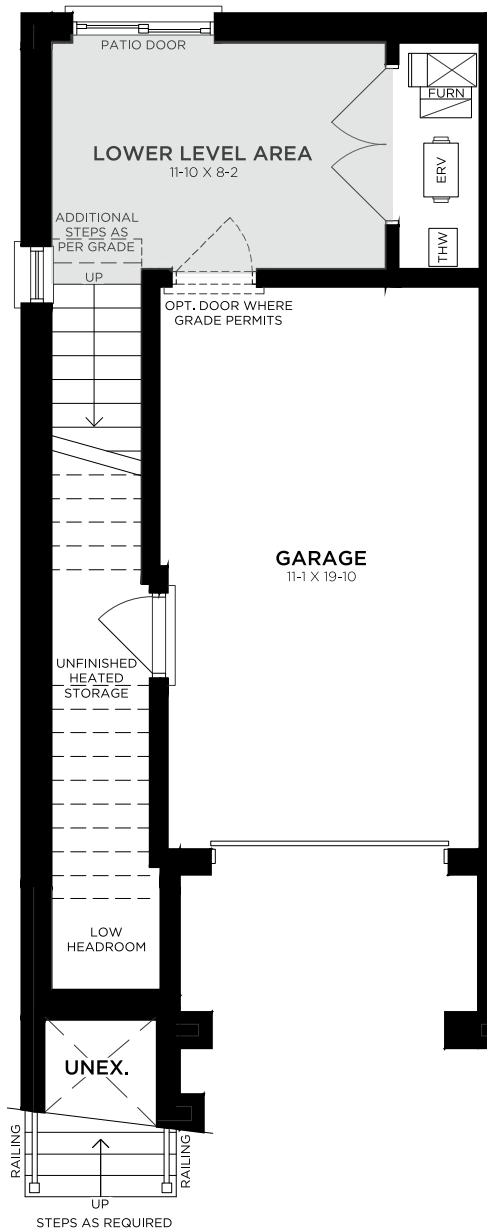
warranted by the Vendor in accordance with the HCRA Directive 3 – Floor Area Calculations, dated February 1, 2021, and updated March 22, 2021 (formerly Taronis's Builder Bulletin 22). A tolerance of 2.0% on the total area measurement is acceptable. Garage area is excluded from the floor area calculation, while any finished, year-round habitable space above the garage is included. Features noted as "where grade permits" or "subject to grading" may not be feasible depending on the grading of the land. In some cases, this may require adjacent floor areas to be lowered by one riser, resulting in "sunken" areas. Product availability is constantly changing. Prices are accurate at the time of publishing and subject to change. Move in dates vary and may not be guaranteed in all circumstances. Free upgrade packages and included extras have no cash redemption value and may consist of pre-selected items. E. & O. E. August 27, 2025 12:22 PM.

# 16' ESPRIT

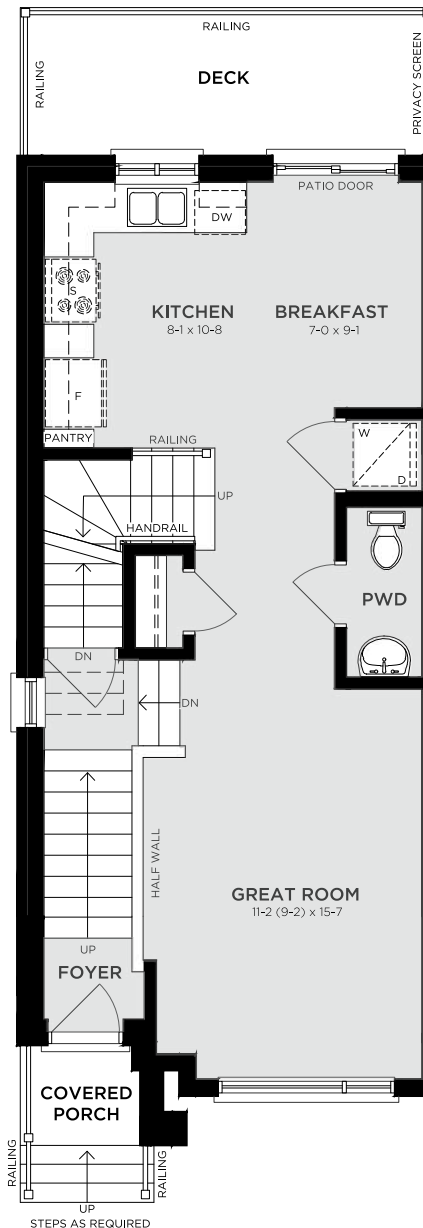
CUSTOM END UNITS &  
CUSTOM ENHANCED ENDS

## CUSTOM END UNITS

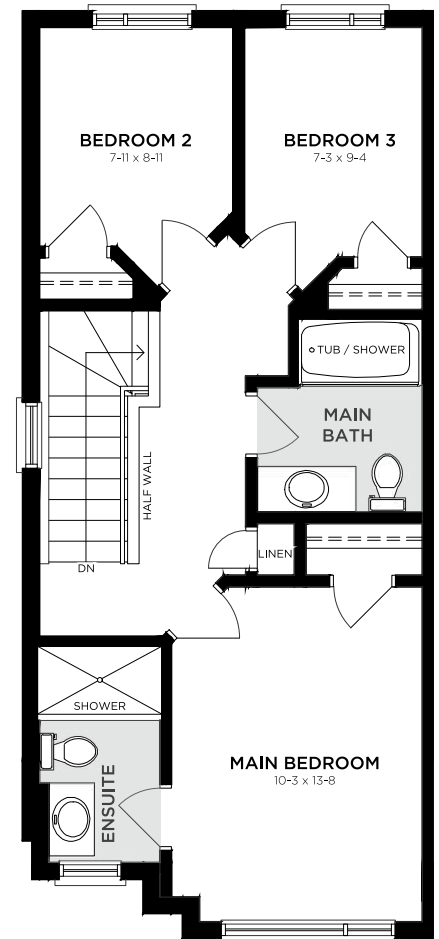
### GROUND FLOOR (G1)



### MAIN FLOOR (M1)



### SECOND FLOOR (S3)



\*Please refer to page 23 for additional information and legal disclaimers. Actual usable floor space may vary from the stated floor area. Room dimensions shown in the Vendor's marketing materials are approximate and not warranted, as variations may arise due to site conditions, engineering, or structural requirements. Construction of Dwelling may not be as shown. Some features labelled "Optional" or "Opt" are available at an additional cost. Exterior renderings are artist's concept and are subject to architectural controls, material availability, applicable floor plans, and site conditions. Window placement on side and rear elevations may be altered or omitted due to side yard setbacks, rear grading, or other site constraints. All details, dimensions, finishes, features, fixtures and specifications are subject to change without notice at the discretion of the vendor, the municipality, the developer, or the vendor's control architect. Total square footage is



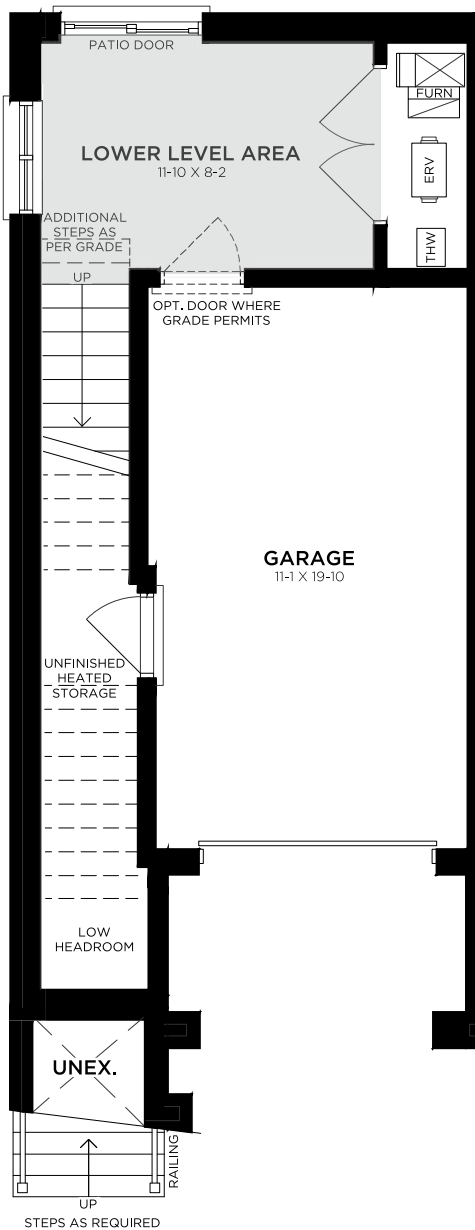
 3  2.5  
 1,344 SQ. FT.

END F1 F2 F2 F1 END

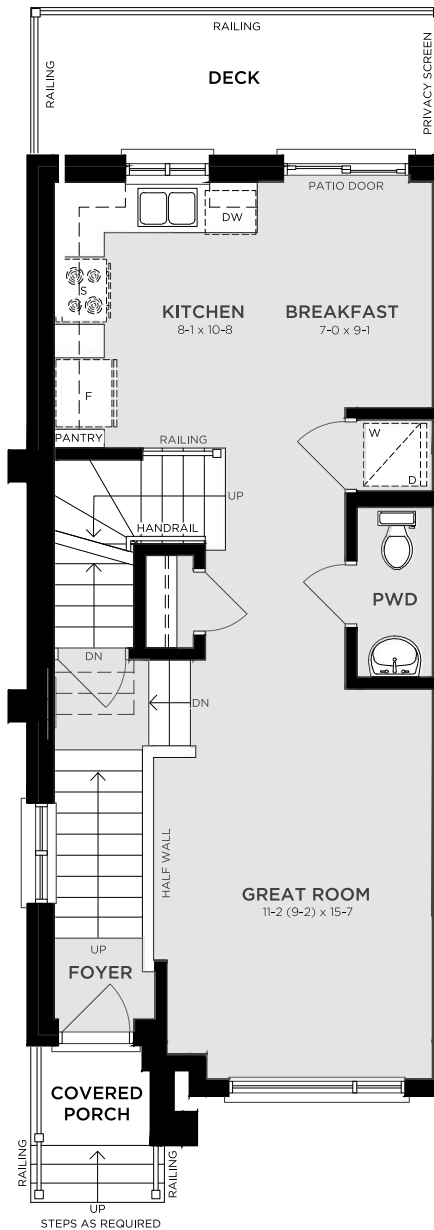


## CUSTOM ENHANCED END UNITS

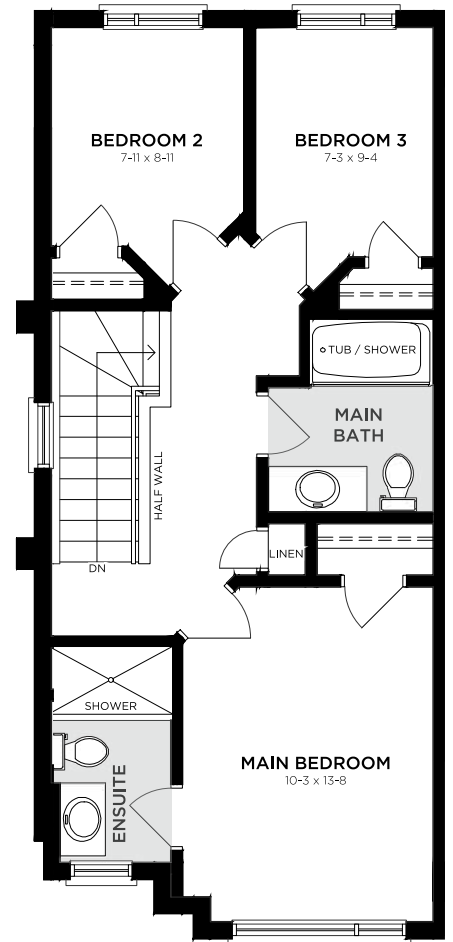
### GROUND FLOOR (G1)



### MAIN FLOOR (M1)



### SECOND FLOOR (S3)



warranted by the Vendor in accordance with the HCRA Directive 3 – Floor Area Calculations, dated February 1, 2021, and updated March 22, 2021 (formerly Tarion's Builder Bulletin 22). A tolerance of 2.0% on the total area measurement is acceptable. Garage area is excluded from the floor area calculation, while any finished, year-round habitable space above the garage is included. Features noted as "where grade permits" or "subject to grading" may not be feasible depending on the grading of the land. In some cases, this may require adjacent floor areas to be lowered by one riser, resulting in "sunken" areas. Product availability is constantly changing. Prices are accurate at the time of publishing and subject to change. Move in dates vary and may not be guaranteed in all circumstances. Free upgrade packages and included extras have no cash redemption value and may consist of pre-selected items. E. & O. E. August 27, 2025 12:22 PM.

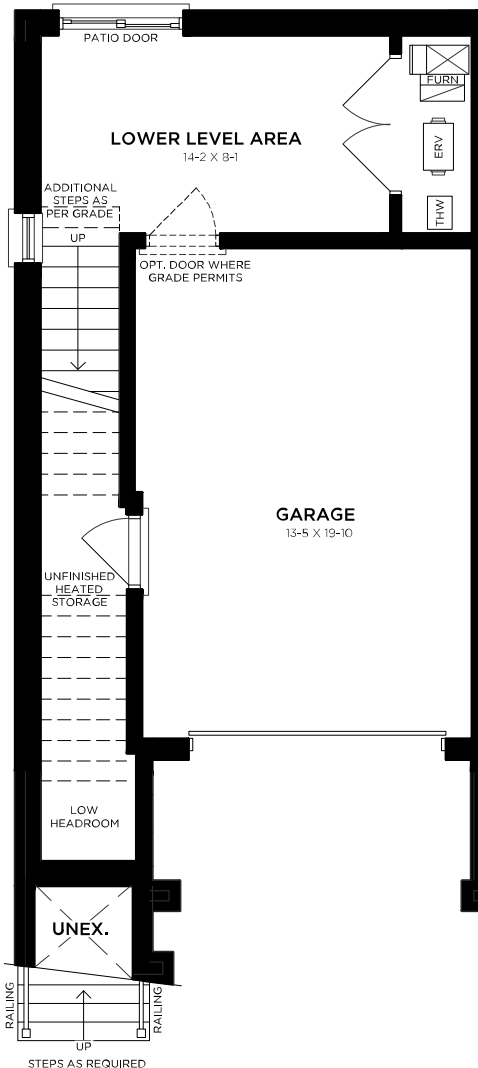
**LOSANI**  
HOMES

# 18' ESPRIT

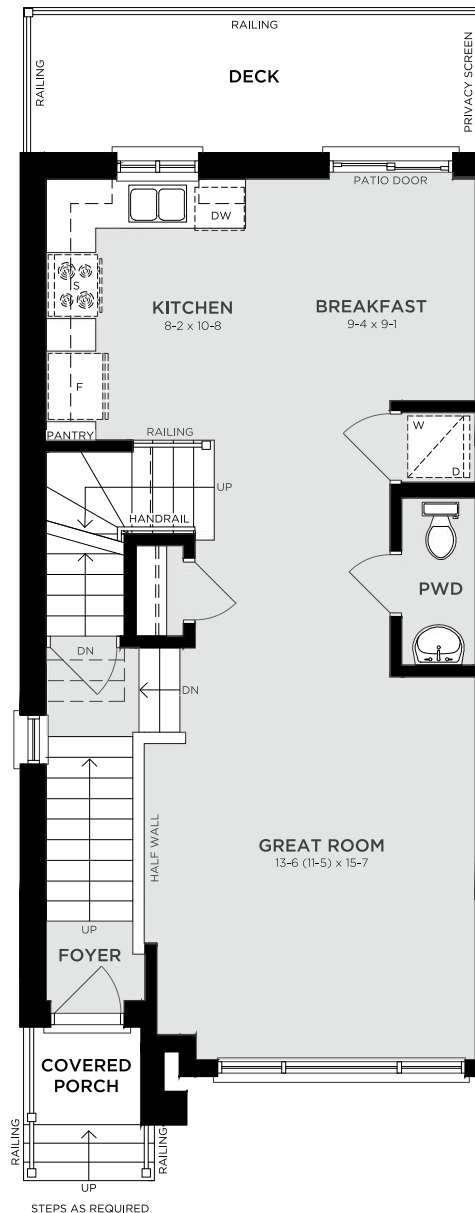
CUSTOM END UNITS &  
CUSTOM ENHANCED ENDS

## CUSTOM END UNITS

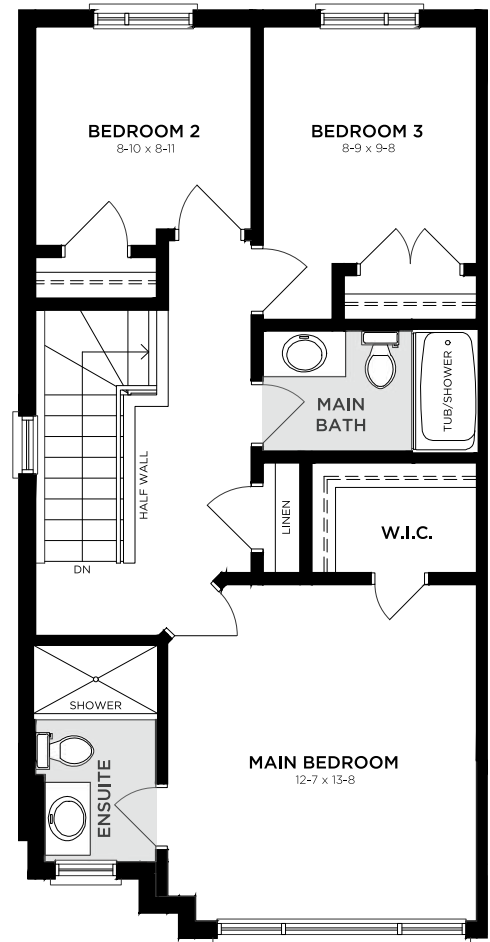
### GROUND FLOOR (G1)



### MAIN FLOOR (M1)



### SECOND FLOOR (S3)



\*Please refer to page 23 for additional information and legal disclaimers. Actual usable floor space may vary from the stated floor area. Room dimensions shown in the Vendor's marketing materials are approximate and not warranted, as variations may arise due to site conditions, engineering, or structural requirements. Construction of Dwelling may not be as shown. Some features labelled "Optional" or "Opt" are available at an additional cost. Exterior renderings are artist's concept and are subject to architectural controls, material availability, applicable floor plans, and site conditions. Window placement on side and rear elevations may be altered or omitted due to side yard setbacks, rear grading, or other site constraints. All details, dimensions, finishes, features, fixtures and specifications are subject to change without notice at the discretion of the vendor, the municipality, the developer, or the vendor's control architect. Total square footage is



 3
  2.5  
 1,535 SQ. FT.

END F1 F2 F2 F1 END

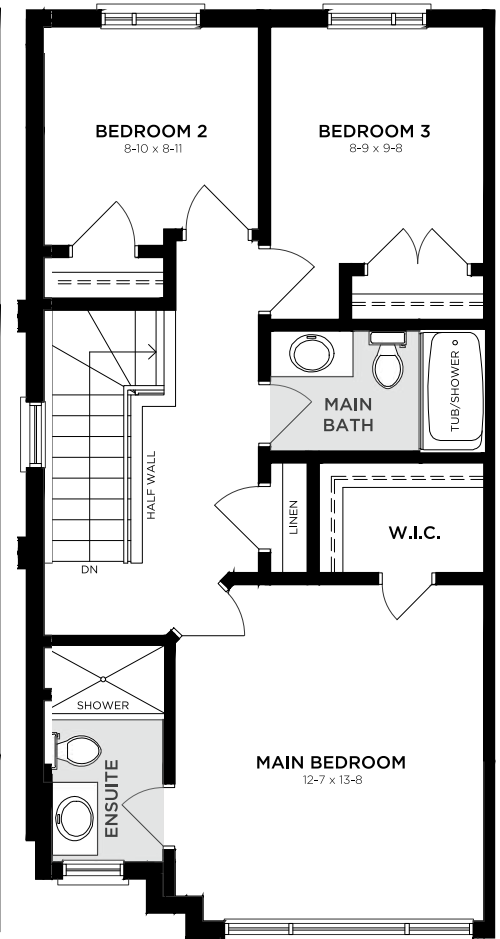
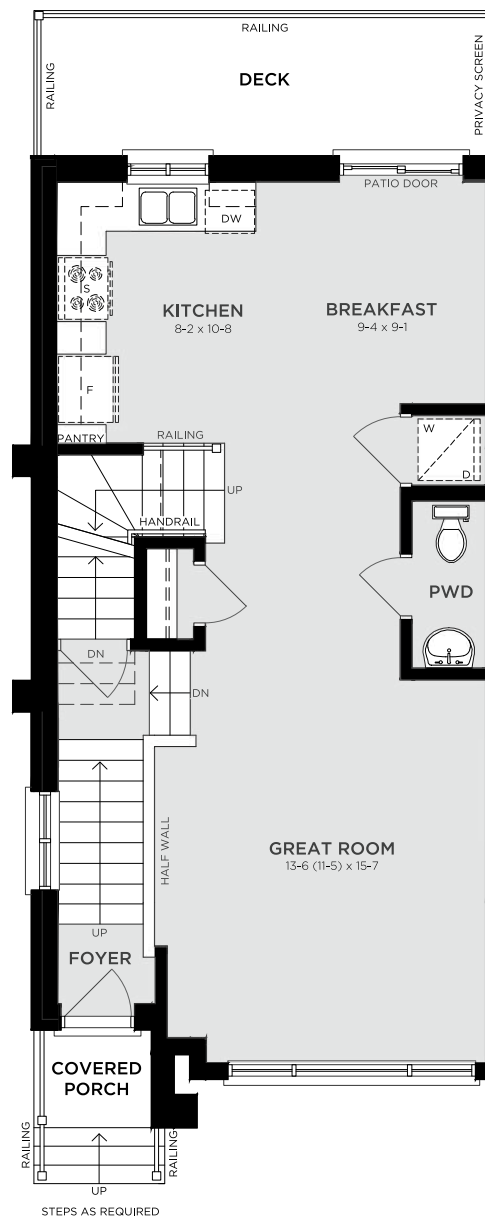
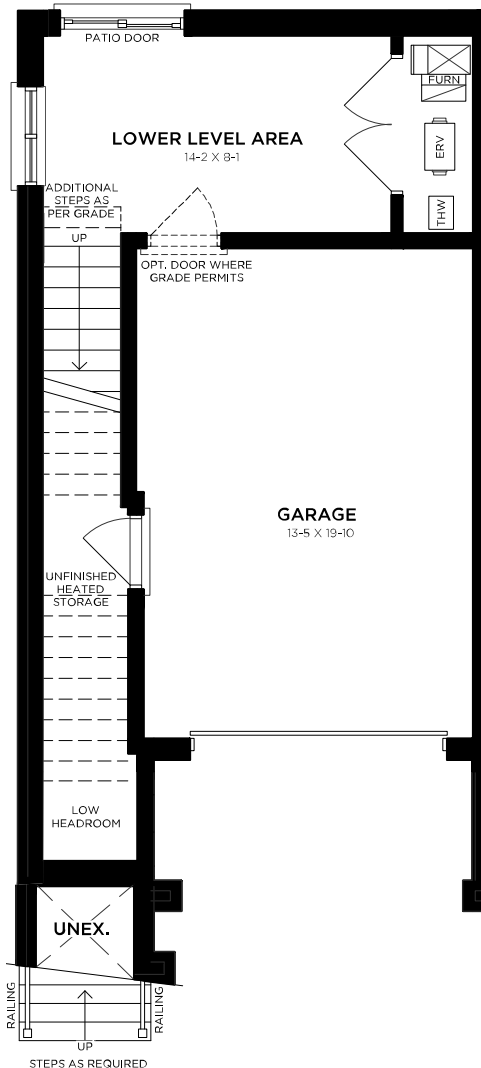


## CUSTOM ENHANCED END UNITS

### GROUND FLOOR (G1)

### MAIN FLOOR (M1)

### SECOND FLOOR (S3)



warranted by the Vendor in accordance with the HCRA Directive 3 – Floor Area Calculations, dated February 1, 2021, and updated March 22, 2021 (formerly Tarion's Builder Bulletin 22). A tolerance of 2.0% on the total area measurement is acceptable. Garage area is excluded from the floor area calculation, while any finished, year-round habitable space above the garage is included. Features noted as "where grade permits" or "subject to grading" may not be feasible depending on the grading of the land. In some cases, this may require adjacent floor areas to be lowered by one riser, resulting in "sunken" areas. Product availability is constantly changing. Prices are accurate at the time of publishing and subject to change. Move in dates vary and may not be guaranteed in all circumstances. Free upgrade packages and included extras have no cash redemption value and may consist of pre-selected items. E. & O. E. August 27, 2025 12:22 PM.

**LOSANI**  
HOMES



3

1

6

5

2

4

# MODERN ARCHITECTURAL FEATURES

- 1 Fresh Bright Colour Palette
- 2 Light Stone and Brick
- 3 Wooden Treatment Facades
- 4 Modern Glass Doors
- 5 Offset Windows Panes
- 6 Wood Grained Panel Treatments





## DISTINCTIVE CONSTRUCTION & EXTERIOR FEATURES

- Brick veneer, siding, stucco, stone, or other accents as per plans and elevations. Brick to top of first storey window on sides and rear of dwelling for two storey models.
- All homes feature nine-foot ceilings on the main level, except where dropped ceilings are required.
- Sub-floors shall be sanded at joints and screwed and glued.
- All windows except basement to be vinyl clad casement windows with pre-finished sealed decorative grills on front elevations only, as per plan and elevation.
- Dark casement windows as per plan (Does not apply to below grade windows).
- Pre-finished vinyl sliding patio door as per plans.\*
- Pre-finished soffits, fascia, eavestroughs and downspouts.
- All exterior woodwork to be painted to match exterior colour package.
- Front entry swing door(s) will be thermal insulated fibreglass, may include sidelites or transoms as per plans and will be painted as per exterior colour package.
- Front entry doors feature grip set and deadbolt with satin nickel finish.
- All exterior doors feature exterior lights.
- Poured concrete foundation.
- Exterior foundation walls are damp-proofed with a spray tar sealant and wrapped in a solid plastic drainage membrane.
- All exterior walls of habitable rooms above foundation to be 2" x 6" construction.
- Foam spray insulation in the garage ceiling to the extent of the finished area above to help prevent air infiltration.
- All interior walls that adjoin the garage will be insulated.
- Garages to be fully drywalled, with first-coat rough tape with electrical receptacle for future garage door opener.
- Prefinished insulated steel sectional garage door, may include lites as per plan.\*
- Saw-cut garage and basement floors.
- Poured concrete garage floors with steel reinforcing.
- Two exterior water taps to be installed, one in garage and one on exterior with separate basement shut off valves.
- Fully sodded lot as per site plan. The lot will be graded to the requirements of the authority having jurisdiction. Sod completion may occur after occupancy.
- Freehold communities to receive base coat only asphalt paved driveway. Condominium communities to receive one single coat only asphalt paved driveway.
- Self-sealing quality roof shingles with manufacturer's twenty-five-year rating.
- Address stone with engraved municipal address.
- Walkway from the driveway to front doorstep(s) as designated by grade.



## SUPERIOR INTERIOR FEATURES

- Finished main level staircase with carpeted treads and risers. May include stained oak stringers or painted stringers, railings and spindles or just stained handrail as per plan.\*
- Interior modern trim approximately includes 2¾" casings and 4" baseboards.
- Satin nickel finish, interior door levers, and hinges.
- Interior walls to be finished with quality flat paint.
- Interior doors and trim will be finished with semi-gloss Losani White paint.
- Ceilings in all rooms will be "California Knockdown" texture finish, except kitchen, bathrooms, and finished laundry area which will be smooth finish.
- Ceiling drywall is installed over floating metal resilient channels on all trussed ceilings for straighter ceiling finishes.
- All drywall corner beads are square metal beads with paper covering.
- Builder standard Berber carpet on 3/8" chip foam under pad in finished areas as per plans\*.
- Vinyl floor in foyer, powder room, kitchen, breakfast room, laundry room, all bathrooms, and Ground floor, as per plans.\*
- High performance engineered subfloor.
- Where a laundry area is located on the second floor, the washer area will be supplied with a fiberglass basin complete with drain. Where a laundry tub is not provided, there will be an in-wall housing unit that allows for hot and cold-water supply and waste disposal outlet for future washer.
- Wire closet shelving throughout including linen closet(s).
- Closet doors are full doors, either swing, bypass or bi-fold style, as per plan.\*
- Interior doors are two panel smooth doors.
- All full swing interior doors feature triple hinge construction and are hung on fully cased jams and fully trimmed.
- All half walls are capped and cased in MDF with painted finish.

\*From the Vendor's Standard Sample Selection

Features, finishes, details, dimensions, treatments, specifications, and fixtures shown vary by site and product type and may be changed by the vendor, the municipality, the developer, or the vendor's control architect, in their sole and unfettered discretion at any time without notice. Specifications may also change due to the availability of materials, site conditions, municipal requirements, and/or changes to applicable building codes. Alternate features may be provided as "permitted substitutions" in circumstances prescribed by the Tarion Warranty Corporation. Samples of the materials currently offered by Losani Homes are available for viewing at the Losani Homes Design Centre. August 27, 2025 12:22 PM



## KITCHEN FEATURES

- Venting for hood fan to exterior.
- Quality finished cabinets, with laminate countertops.
- Townhomes and multi-units to receive single bank of drawers in kitchen cabinetry as per plan.\*
- Cabinet doors and drawer fronts available in maple, oak or other materials.
- Extended height upper cabinets.
- Breakfast bar is optional when specified on plans.\*
- Stainless steel ledge back sink with chrome kitchen faucet with pull out spray.
- Open undercounter area for future dishwasher (cabinet not provided) including electrical and plumbing rough-in (not connected).
- All electrical receptacles in the kitchen counter area are on a dedicated circuit.
- Outlet on island only provided when plumbing, electrical, or HVAC components are located within.

## BATHROOM FEATURES

- Quality finish cabinets with laminate countertop.
- Cabinet doors and drawer fronts available in maple, oak, and other materials.
- Mirror(s) installed above vanity may be glued.
- Premium china sinks used in all bathrooms.
- White bath fixtures throughout.
- Tub/shower combination enclosure to include wall tile or high-quality acrylic wall system to ceiling (not including ceiling).
- Tension shower rod all bathrooms.
- Powder room includes a pedestal sink and lavatory faucet.
- Premium elongated low consumption toilets.
- Single lever faucets (with exception of laundry) and pressure balanced shower controls.
- All bathroom sinks are fitted with mechanical pop-up drains.
- All plumbing fixtures are fitted with shut-off valves.
- Showers to include full-height wall surround in tile or high-quality acrylic wall system, with acrylic base, as per plan.\*

\*From the Vendor's Standard Sample Selection

Features, finishes, details, dimensions, treatments, specifications, and fixtures shown vary by site and product type and may be changed by the vendor, the municipality, the developer, or the vendor's control architect, in their sole and unfettered discretion at any time without notice. Specifications may also change due to the availability of materials, site conditions, municipal requirements, and/or changes to applicable building codes. Alternate features may be provided as "permitted substitutions" in circumstances prescribed by the Tarion Warranty Corporation. Samples of the materials currently offered by Losani Homes are available for viewing at the Losani Homes Design Centre. August 27, 2025 12:22 PM





## ELECTRICAL & MECHANICAL FEATURES

- 1100-amp breaker panel installed; location may vary.
- Electrical receptacle with integrated USB port in kitchen.
- Two (2) exterior weatherproof electric outlets connected to a safety ground-fault circuit; one each at rear and front of home.
- Exterior soffit, complete with 1 holiday receptacle.
- Early warning smoke detectors including a visual component conforming to National Fire Protection Association standards, installed per Building Code.
- Carbon monoxide detector directly connected to electrical panel.
- Draft resistant electrical boxes at exterior walls.
- Heavy duty wiring and receptacle/outlet for stove and dryer.
- All utility rooms are unfinished.
- White Decora-style switches throughout the home.
- Electric door chime for front entry.
- Lights at front of home will be coach lamps or modern lamps or exterior portlights as per plan and elevation.\*
- High efficiency furnace installed on rubber pads rather than concrete floor to reduce vibration, noise, and prevent corrosion, location may vary.
- All heating systems are sized for future installation of air conditioning systems.
- Rental water heaters are tankless high efficiency direct vent water heaters (some homes require power venting), location may vary.
- The Dwelling is supplied with a Energy Recovery Ventilation unit "ERV" supplied on a rental basis through an ERV supplier. The Purchaser acknowledges and agrees to be assume and be bound by the standard terms and conditions of the rental ERV unit supplier and the market rent offered by the supplier as at the time of closing.
- Exhaust fans in all bathrooms and laundry room areas as required.
- Power exhaust override by the main floor thermostat for humidity control.
- Efficient programmable thermostats to be installed.

\*From the Vendor's Standard Sample Selection  
Features, finishes, details, dimensions, treatments, specifications, and fixtures shown vary by site and product type and may be changed by the vendor, the municipality, the developer, or the vendor's control architect, in their sole and unfettered discretion at any time without notice. Specifications may also change due to the availability of materials, site conditions, municipal requirements, and/or changes to applicable building codes. Alternate features may be provided as "permitted substitutions" in circumstances prescribed by the Tarion Warranty Corporation. Samples of the materials currently offered by Losani Homes are available for viewing at the Losani Homes Design Centre. August 27, 2025 12:22 PM

# SALES INFORMATION



Beamsville Sales Centre

## BEAMSVILLE SALES CENTRE

📍 4008 Mountain St., Beamsville  
☎ (905) 594-0541

### For Benchmark Townhome Inquiries

✉ benchmarksales@losanihomes.com  
🌐 benchmarkvistaridge.com

### For Woodview Singles Inquiries

✉ woodviewsales@losanihomes.com  
🌐 woodviewvistaridge.com

### For Maplewood Park Semis Inquiries

✉ maplewoodsales@losanihomes.com  
🌐 maplewoodstoneycreek.com

## OTHER SALES CENTRES

### HQ New Homes Sales Centre

📍 430 McNeilly Rd., Suite 101, Stoney Creek  
🕒 Mon-Fri 12-5pm  
☎ (289) 309-6280  
✉ hqsales@losanihomes.com

### Riverbank Estates Sales Centre

📍 30 Grand River St. N., Paris  
☎ (905) 594-0542

### For Riverbank Estates Singles Inquires

✉ riverbanksinglessales@losanihomes.com  
🌐 riverbankparis.com

### For Parkview Freehold Townhomes Inquires

✉ riverbanktownssales@losanihomes.com  
🌐 parkviewparis.com

# LEGAL DISCLAIMERS

**Marketing Site Plan:** This site plan depicts a draft plan submitted to the municipality for development approvals. All details, dimensions, adjacent land uses and features shown on this plan are intended to display the preliminary lot plan of the lot purchased herein only. The lots, dimensions, driveway locations, sidewalks, grading, retaining walls, depth measurements, fencing details, landscaping features, and adjacent lots are subject to approval by the municipality, the Vendor's consulting engineers, and developer. All elements shown are subject to change without notice and may differ.

**Renderings:** Artist's concept only. Construction of Dwelling may not be exactly as shown. Some features shown may be optional extras at additional cost. Exterior elevations, renderings and sketches are subject to architectural controls, the availability of materials to the Vendor during the construction of the Dwelling, and site conditions. Some windows shown on side elevations may not be available due to the applicable side yard setback. All details, dimensions, elevations, treatments, specifications, and features shown may be changed by the vendor, the municipality, the developer, or the vendor's control architect, in their sole and unfettered discretion at any time without notice.

**Products:** Prices are accurate at the time of publishing and subject to change. Move in dates vary and may not be guaranteed in all circumstances. Free upgrade packages and included extras have no cash redemption value and may consist of pre-selected items. Images shown in this product book depict Losani Homes designs and products generally as constructed in previous developments. All finished products are subject to availability at the time of purchase and vary by location and model type. Finished products may differ from the images shown due to lighting conditions, dye lot variances, and other factors. Accordingly, all features shown are for illustration purposes only and may not be exactly as shown or be available to all home buyers. Items shown such as furniture, artwork, window coverings and area rugs are shown for staging purposes only and are sold separately by other vendors. Reproduction of any images displayed in this product book is strictly prohibited. For more information, please contact a Losani Homes home design centre representative.

**Floorplans:** Actual usable floor space may vary from the stated floor area. Room dimensions shown in the Vendor's marketing materials are approximate and not warranted, as variations may arise due to site conditions, engineering, or structural requirements. Construction of Dwelling may not be as shown. Some features labelled "Optional" or "Opt" are available at an additional cost. Exterior renderings are artist's concept and are subject to architectural controls, material availability, applicable floor plans, and site conditions. Window placement on side and rear elevations may be altered or omitted due to side yard setbacks, rear grading, or other site constraints. All details, dimensions, finishes, features, fixtures and specifications are subject to change without notice at the discretion of the vendor, the municipality, the developer, or the vendor's control architect. Total square footage is warranted by the Vendor in accordance with the HCRA Directive 3 – Floor Area Calculations, dated February 1, 2021, and updated March 22, 2021 (formerly Tarion's Builder Bulletin 22). A tolerance of 2.0% on the total area measurement is acceptable. Garage area is excluded from the floor area calculation, while any finished, year-round habitable space above the garage is included. Features noted as "where grade permits" or "subject to grading" may not be feasible depending on the grading of the land. In some cases, this may require adjacent floor areas to be lowered by one riser, resulting in "sunken" areas. Product availability is constantly changing.

**Extras, Options, Upgrades:** The supply and installation of items may be restricted due to the unavailability of materials from the Vendor's suppliers, structural or engineering requirements, site conditions, or architectural controls. In the event that the Vendor is unable or unwilling to supply or install any of the extras, upgrades, modifications or options set out in this amendment/change order, the Vendor's liability for such item shall be limited to a refund or cancellation of the price paid or to be paid by the Purchaser for such extra, upgrade, modification or option. Alternatively, the Vendor may substitute materials of equal or better quality.

**Marketing Materials:** This product book and all materials contained herein, including but not limited to renderings, floor plans, and elevations, are copyrighted property of Losani Homes. No portion may be copied, reproduced, distributed, or modified, in whole or in part, without the prior written consent of Losani Homes. Use of any images or materials for the re-sale, assignment or rental of homes or apartments constructed by Losani Homes is strictly prohibited. Losani Homes reserves the right to fully enforce its intellectual property rights to the fullest extent permitted by law.

E & OE August 27, 2025 12:22 PM.





**[BenchmarkVistaRidge.com](http://BenchmarkVistaRidge.com)**

**(905) 594-0541**

**[benchmarksales@losanihomes.com](mailto:benchmarksales@losanihomes.com)**

**Sales Centre: 4008 Mountain Street, Beamsville, Ontario | LOR 1B2**

**LOSANI**  
H O M E S