

Enriched With Amenities

The Best Of Paris



A Guide to the *Best of Paris*



04 *Discover Paris*

Historic charm and timeless nature come together in Canada's Prettiest Little Town.



10 *Shops & Restaurants*

Find styles and flavours to suit every mood, taste, and budget.



22 *Parks & Recreation*

There are endless opportunities to play, learn, and create, both indoors, and out.

28 *Hit the Trail*

An expansive trail system winds through the countryside, leading adventurers onwards over hill, and dale.



36 *Explore the River*

A world of water, right at your door. Discover all that Paris has to offer on the Grand and Nith Rivers.



Discover Paris

William Street Bridge overlooking The Grand River

Canada's *Prettiest* Little Town

As a Canadian Heritage river winds gently through this charming little town, its banks are dotted with historic architecture, soaring church spires, wide open meadows, fairy tale woods, scenic trails, and bustling markets. Welcome to Paris, named by Harrowsmith Magazine as the prettiest little town in Canada.

The Grand River and its many tributaries, creeks, ponds, and streams offers a spectacular backdrop for a thrilling, water-inspired lifestyle. Swim in the crystal

clear waters. Toss a line from the riverbank. Tube downstream on the current or paddleboard down the river. There's endless fun and adventure awaiting you here.

Discover a countryside that offers miles of trails winding through forests, ponds, creeks, and wetlands. Stop by on your hike for a refreshing break at a country farm and enjoy fresh baked goodies. Bike through hundreds of acres of trails crisscrossing the landscape. Lace up your hiking boots, pack a lunch and set forth on an exciting adventure of discovery.



Stillwaters Restaurant



Nith River Trail



Nith River

Why Paris?

- Quaint, small-town charm with a historic and vibrant cobblestoned downtown alongside the Grand River.
- A fascinating array of specialty shops, boutiques, restaurants, bars, and patios with great river views.
- Hundreds of acres of stunning natural beauty, with hiking and biking trails winding through the countryside.
- Vibrant parks, sports fields, playgrounds, and recreation centres provide healthy, active, outdoor living.
- Great schools, libraries, and academic facilities aimed at providing kids of all ages with an all-round education.
- Easy access to Highway 403 means quick connections to Brantford, Hamilton, and Toronto.
- Paris offers all essential amenities such as a full-service community hospital, library, schools, fairgrounds, and more.
- Called the “Antique Capital of Canada”, with its rich variety of stores selling antiques, artifacts, and curios.



Downtown Paris



Arlington Hotel



Arlington Hotel



Downtown Paris



TORONTO
1 hour 30 minutes

MISSISSAUGA
50 minutes

BURLINGTON
35 minutes

HAMILTON
25 minutes

NIAGARA FALLS
1 hour 20 minutes

**LAKE
ONTARIO**

QEW

BRANTFORD
10 minutes

**HWY
24**

**GRAND
RIVER**

**DOWNTOWN
PARIS**

**HWY
5**


RIVERBANK ESTATES
NITH RIVER, PARIS

**NITH
RIVER**

**HWY
2**

**HWY
403**

BRANTFORD
Municipal Airport

Shops & Restaurants



Downtown Paris

Paris invites you to explore and experience its picture-postcard pretty, walkable downtown. Find the perfect gift at the famed Paris Road Antiques. Check out Wincey Mills, a heritage building that's now home to a vibrant mix of antique stores, boutiques, gourmet coffee shops, and fresh markets. Treat yourself after a day of shopping with a decadent dessert from Chocolate Sensations.

Downtown Paris also offers an outstanding dining experience with panoramic views of the gently flowing Grand River. From bars, pubs and bistros to sushi, smokehouses, and great patios at Capeesh and 2 Rivers. Whether it's a special candle-lit dinner with your sweetheart or a group of enthusiastic fans celebrating a hockey victory, Paris has a place to suit every occasion, taste or budget.

2 GROCERY STORES | 1 MUSEUM | 6 CAFES/BAKERIES
18 SPECIALTY SHOPS | 35+ RESTAURANTS
ALL WITHIN A 2KM RADIUS FROM THE CENTER OF PARIS!

Stillwaters!

In this romantic setting right on the river, Top Chef Canada Winner William Thompson sources market fresh, local ingredients to create unforgettable food in an unforgettable atmosphere.

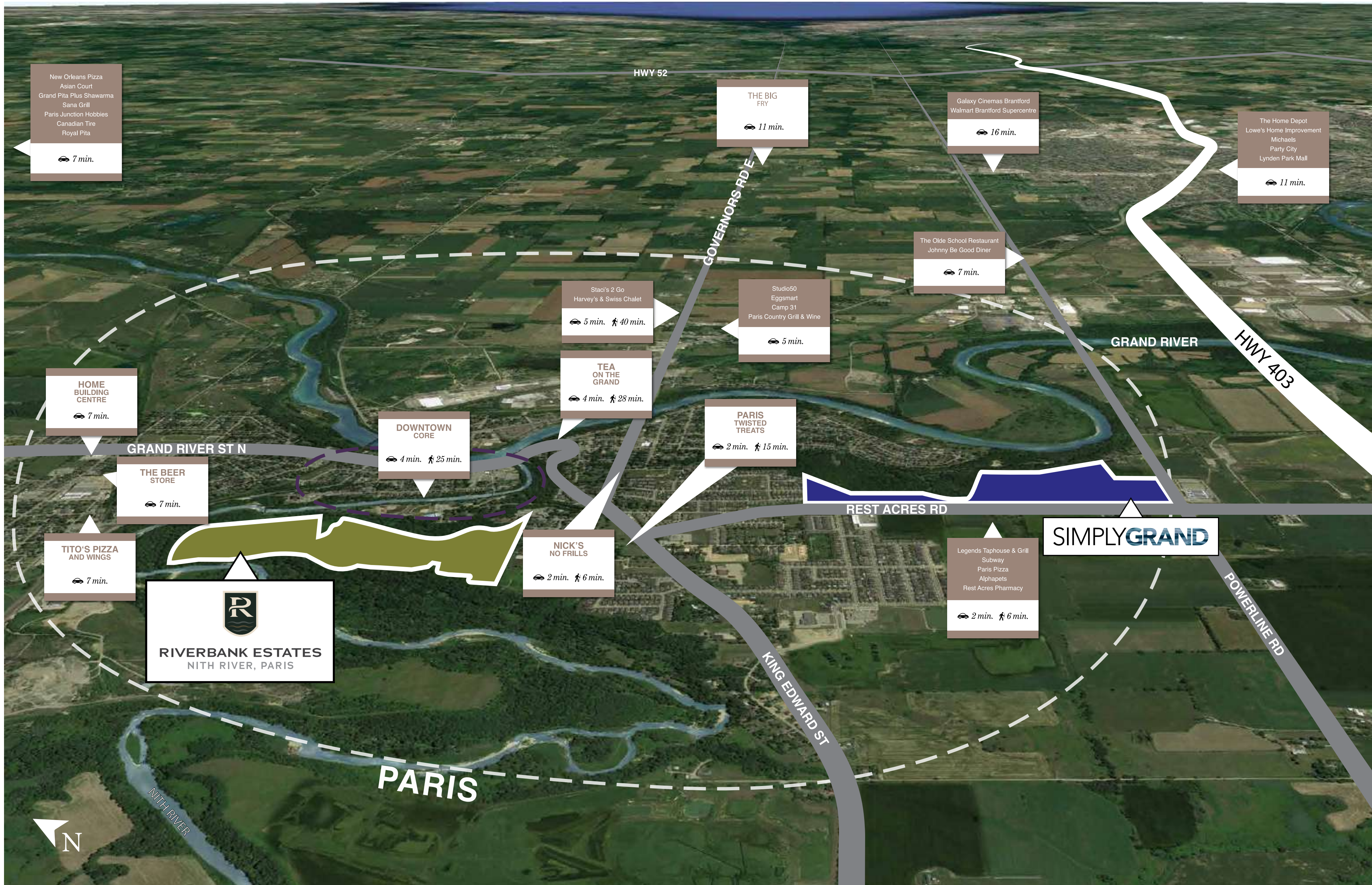
With 10 beers on tap and a rooftop patio with a panoramic view of Paris and the Grand River, you can enjoy an extensive menu of lunch, dinner, or late-night snacks. Stillwaters! means comfort, fun, and affordable elegance.



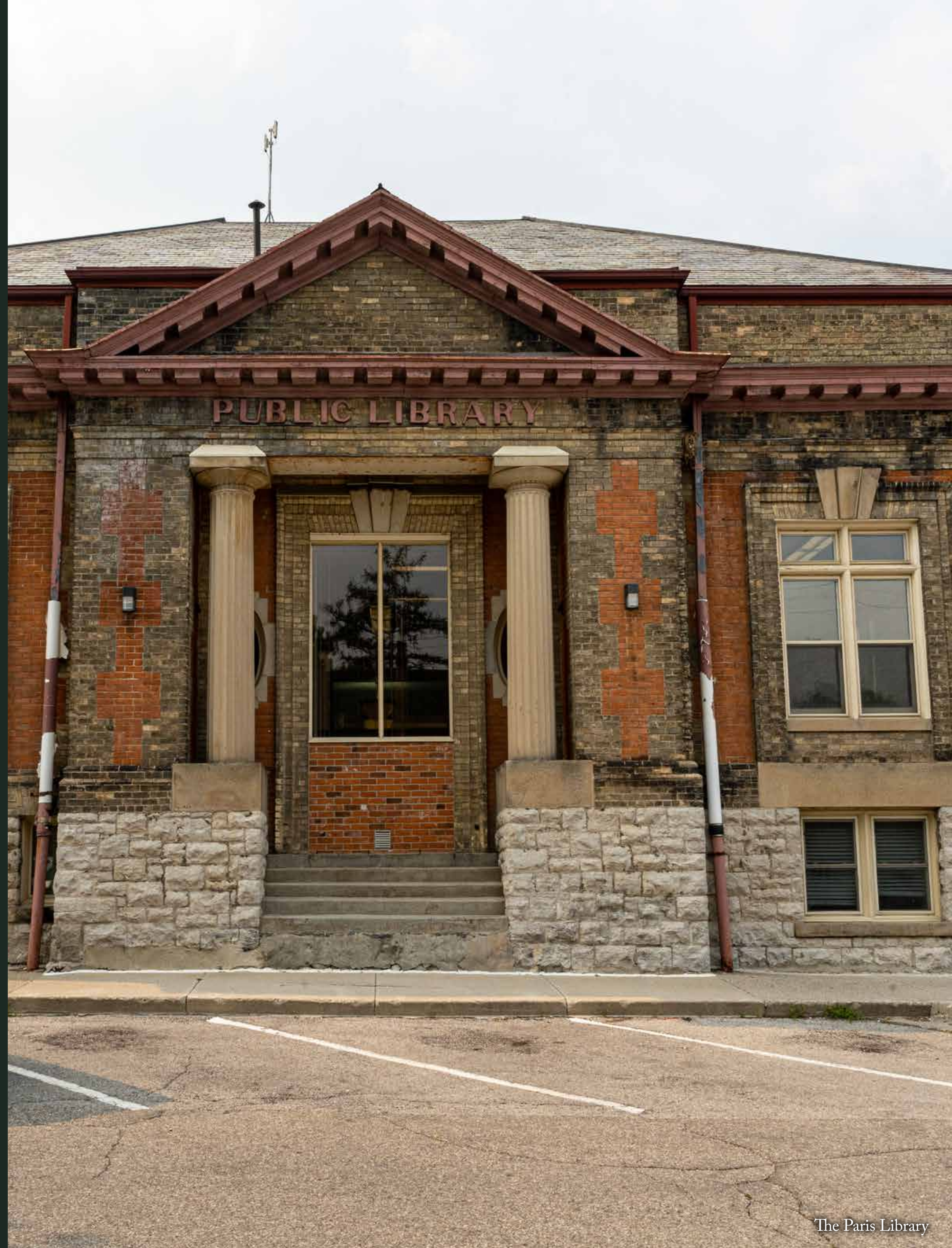
Stillwaters Restaurant



Shops & Restaurants



The Cobblestone Capital of
Canada



The Paris Library

The Cobblestone Capital of Canada



Paris Heritage Home

Talk a walk down memory lane and explore the historic roots of Paris as seen in its unique cobblestone buildings. In the 1800s, these round polished stones were quarried from the Nith and Grand Rivers and used to build homes, farmsteads and barns. Famed New York architect and master mason Levi Boughton perfected a technique of building with these cobblestones, and his amazing craft can still be seen in Paris to this day.

Today a dozen or so of these beautiful cobblestone buildings majestically stand in and around the charming and picturesque downtown district. Explore them at your own pace or join a guided walking tour and hear knowledgeable experts relate the origin and back story to each building. For instance, a traditional farmhouse would require over 14,000 cobblestones to build. That's history written in stone for you!



Downtown Paris



The Paris Presbyterian Church

The Best of Schools

Growing up in a small town means that the attention and care you get is a little more personal. In addition to quality daycares and nurseries, Paris has fine primary and secondary schools committed to high achievement in academic, sports, cultural and extracurricular activities. From the latest teaching aids and technologies to hands-on mentoring by qualified, committed teachers and staff, students receive a rich and varied body of knowledge, and practical skills to help them excel.

There are excellent post-secondary schools within commuting distance. The renowned Laurier University has a campus in nearby Brantford. McMaster University also offers a residency program in Brantford. Other colleges in the area include Conestoga College, Six Nations Polytechnic, Westervelt College, and Mohawk College in Hamilton.



Daycares

Cobblestone Child Care Centre
Paris Child Care Inc
Holy Family Child Care
Applewood Montessori and Daycare
Montessori Children's Academy
Creative Expressions Childcare

Schools

Paris Central Elementary School
Cobblestone Elementary School
North Ward School
Sacred Heart School
Holy Family School
Paris District High School

Universities

Laurier University Brantford Campus

Laurier is a premier destination for students who excel both academically and extracurricularly.

Conestoga College

Conestoga College Institute of Technology and Advanced Learning is a renowned public college located in Kitchener.

Six Nations Polytechnic

A unique post-secondary school dedicated to imparting knowledge and skills training to indigenous youth.

McMaster University Brantford Campus

With a residency program in Brantford, McMaster continues its dedication to the cultivation of human potential.

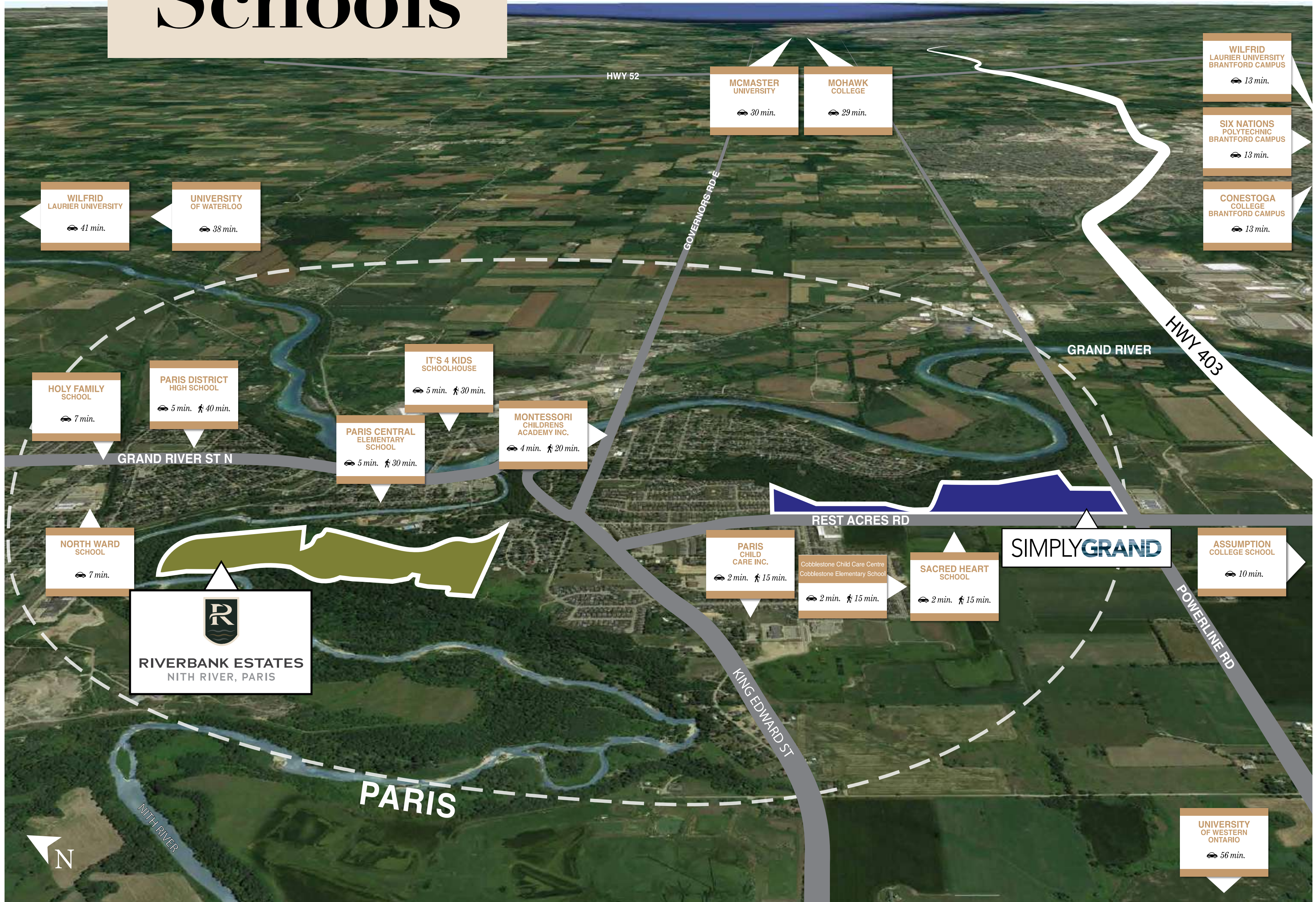
Westervelt College

A well-known private career college with campuses in Brantford, Kitchener, London and Windsor.

Mohawk College

A leader among Ontario's colleges and rooted in the community.

The Best of Schools



Parks & Recreation

Living in Paris means you're part of a vibrant community that plays together in local sport fields, parks, arenas, and recreation centres. A wide selection of parks and trails offer your family the best opportunities to play, explore, and enjoy your beautiful natural surroundings. Lions Park is a remarkable greenspace following the Nith River, home to playing fields, walking trails, picnic spots, and a splash pad. With so many options, there's fun for all ages!

Enroll your kids in soccer and basketball camps at the Syl Apps Community Centre. Cheer your budding hockey champs on the ice at Burford Community Centre. Stop for a picnic at Lions Park or Penmans Dam on the Nith Trail. Or try your hand at lawn bowling at the Paris Lawn Bowling Club.

With an exciting array of indoor and outdoor amenities suitable for all ages and skill levels, Paris is a great place to put down roots and raise a family.



Lions Park

Brant Sports Complex

One of the biggest sporting and leisure facilities in the area, the Brant Sports Complex has two large ice rinks that are open year round. The complex offers a variety of skating and hockey programs for all ages. There's also an elegantly appointed banquet hall, two meeting rooms, and a conference room. Brant Sports Complex is located right next to the Simply Grand community and less than a 5-minute drive from Riverbank Estates.



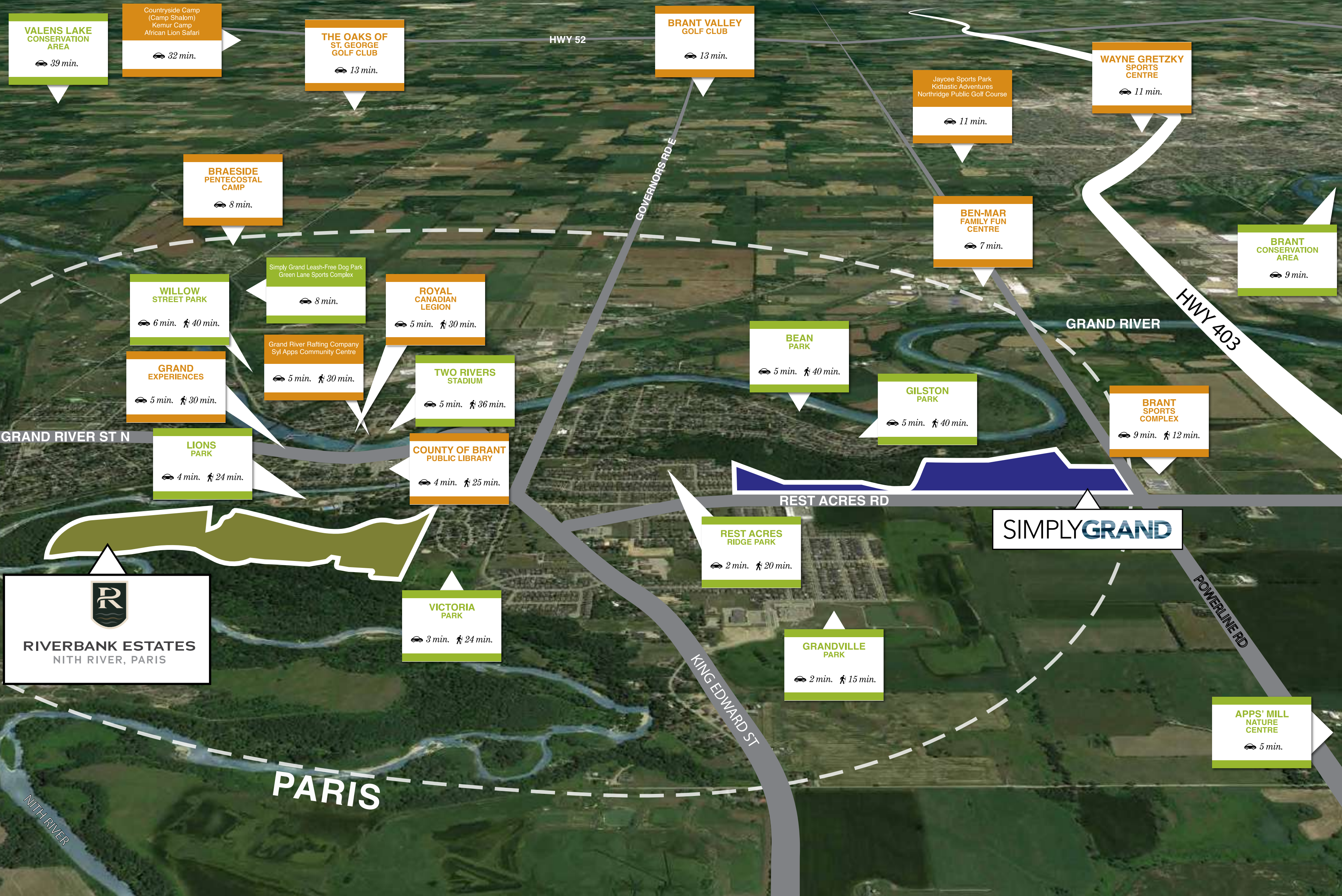
Brant Sports Complex



Lions Park

Parks

& Recreation



This is Your Backyard

Experience a variety of inspiring activities and attractions, right in your own backyard! The scenic 12-acre Lion’s Park, baseball diamonds, open air amphitheatre, the beautiful Nith River Trail, downtown Paris, and more. It’s all here, just steps from home!

BASEBALL DIAMONDS

Score a home run on one of several well-groomed baseball fields in Lions Park.

SPLASH PAD AND POOL

Cool off on a warm summer day at this refreshing splash pad and pool.

WALTER WILLIAMS AMPHITHEATRE

A large open air amphitheatre with a stage and seating, perfect for concerts, plays, and local events.

JUNGLE GYM

Get those little hands and feet busy on the Jungle Gym. Your kids will love it!

ACCESSIBLE PLAYGROUND

With swings and a play area, it’s the perfect, fun place for kids of all ages and skill levels.

NITH RIVER TRAIL SYSTEM

Nith River Trail System is a 3.9 kilometer, moderately trafficked loop trail that follows the winding river. It features a gentle waterfall and is great for all skill levels.

LIONS PARK SENSORY TRAIL

Experience this amazing interactive trail that includes a variety of elements to explore, including musical instruments and a sensory garden. A delight for all the senses.

DOWNTOWN PARIS

Rich in history and tradition, Downtown Paris is a picturesque area bustling with stores, boutiques, restaurants, and cafes with patios overlooking the Grand River.

BRIDGE TO DOWNTOWN PARIS

A pedestrian bridge over the Nith River connects you to all the attractions of downtown.

DISTILLERY TRAIL

Enjoy a pleasant afternoon strolling the Distillery Trail that cuts across a scenic landscape along the Nith River.



Hit the Trail

Explore an enchanting countryside that offers miles of lush wooded trails winding through forests, ponds, creeks, and wetlands. Step next door to Barker's Bush, a pristine, protected, and forested landscape with beautiful trails and picturesque lookout points. Follow the river's course along the Nith Trail. Cross the waters at the classic Penman's Pass pedestrian bridge, and finish your hike at Lions Park for a relaxing afternoon. Go biking on the Hub of Ontario Trails that connect to Port Dover, Hamilton, and Kitchener/Waterloo. Stop for a refreshing break at a country farm and enjoy fresh baked goodies. Set out on an exciting adventure of discovery. Toss a frisbee, kick a football, walk your dog – the great outdoors are calling out to you in Paris!



Trails

Nith River Trail

The Nith River Trail follows the winding Nith River, passing through Lions Park in downtown Paris. It is a 3.9 kilometer loop trail that features a waterfall and is good for all skill levels. You can also walk your dog along this trail.

Cambridge-to-Paris Rail Trail

Follow the old railbed of the Lake Erie and Northern Railway, past woodland and river views.

Grand Valley Trail

The Paris portion of the Grand Valley Trail runs through Brant County and is identified by white blazes.

Newport Bridge to Tutela Heights Trail

See the historical plaque at the Salt Springs Church and head towards Newport along the Grand River.

Paris to Glen Morris Trail

View the picturesque town of Paris from the heights of the trail. Discover interesting facts past River Road.

Apps' Mill Nature Centre Trail

This is a 3.4 kilometer loop trail that features a river and is good for all skill levels.

Westcast Loop Trail

A 5-kilometer lightly trafficked loop trail that features a river and is rated as moderate.

Hit the Trail





Make a Splash

Water sports are a big part of life in Paris. Besides community pools and splash pads, the Grand River is the perfect setting for loads of family fun. A number of services offer regular adventure tours for groups and families, taking them on guided rafting or tubing expeditions on the Grand River and picking them up at the end of the trip - there's no need to paddle upstream!

Meandering rivers, creeks, and streams offer a wide array of water-inspired outdoor experiences amidst spectacular natural beauty. Take a leisurely 11.5 km paddle from Glen Morris or the ambitious 17.5 km trek from Cambridge. Fuel your adrenaline with white water canoeing and kayaking down the Nith River. Float along the Grand River from home to Brant Park. No matter where you start, the river leads to adventure.



Penman's Dam Park

Make a Splash



Go fishing on the Nith or the Grand River



Penman's Dam

Treat the family to a day of fun on the water, with activities like paddleboarding, canoeing, tubing, fly fishing, and more. There's nothing more exhilarating than riding down the rapids in a rubber tube. For family fun in Paris, just add water!



Lions Park Community Pool



Explore

The River



Grand River Rafting Company

(519) 442-2519

Your all-in-one destination for loads of fun and adventure on the Grand River, including boating, tubing, fishing, paddleboarding and more.

Grand Experiences

1+ (888) 258-044

In addition to paddling, Grand Experiences offers a variety of Cycling and Hiking tours of the renowned Bruce Trail and the spectacular Niagara Escarpment.

Canoeing the Grand

(519) 896-0290

There's no better way to experience the scenic Grand River landscape than by a canoe or a kayak. Glide past rocky shorelines, beautiful meadows and sandy beaches.

Grand River Conservation Authority

(519) 621-2761

Your go-to resource for an endless variety of parks, sports, campgrounds, trails and outdoor recreation. Start your amazing Grand River adventure here!

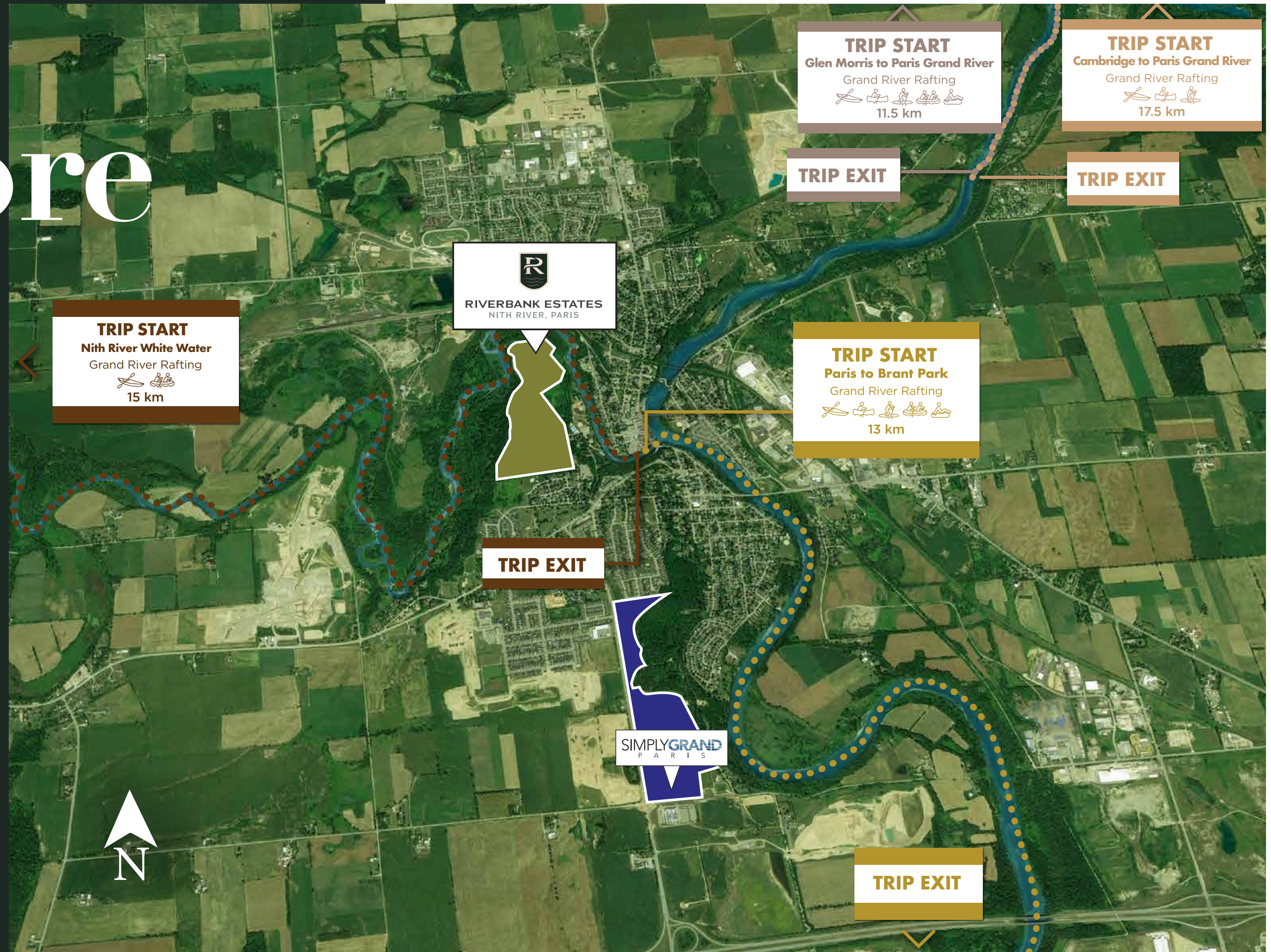
Grand River Marina & Cafe

(647) 588-9032

Your go-to resource for an endless variety of parks, sports, campgrounds, trails and outdoor recreation. Start your amazing Grand River adventure here!

Explore

The River





Fun & Excitement All Year Round

Paris to Ancaster Bike Race

Paris offers a year-round, packed calendar of exciting events, and festivals. With its stunning natural attractions, vibrant and historic downtown, and friendly, fun-loving residents, these festivals bring families together for a celebration of life and community.

Paris Drinks Fest

Held late summer at Lions Park, the Drinks Fest features local breweries, wineries, cideries and distilleries with samplings, food vendors, and great music. Enjoy a day of celebration under the trees in beautiful downtown Paris.

Paris to Ancaster Bike Race

Canada's spring cycling classic, the Paris to Ancaster Bike Race pedals over Ontario's rustic farm lanes and gravel roads. With the largest field of riders in Canada, it's a hit with everyone from everyday riders to Olympians.



Brantford Jazz Festival

Brantford Eats Local

Brantford Eats Local is a new initiative to showcase the amazing local restaurants. For a fixed sum, you can buy a Brantford Eats Local booklet filled with offers from a variety of places and try delicious food and beverages.

Brantford Jazz Festival

Over three days, four stages feature world-class entertainment and the talents of the next generation of jazz artists. You'll hear everything from traditional jazz to big band swing, and Spanish and Afro-Cuban grooves.

Christmas in Paris

Enjoy the finest in warm hospitality and unique holiday shopping, including one-of-a-kind treasures that are hand-made by local talented artisans. A truly delightful experience within an atmosphere of casual comfort.

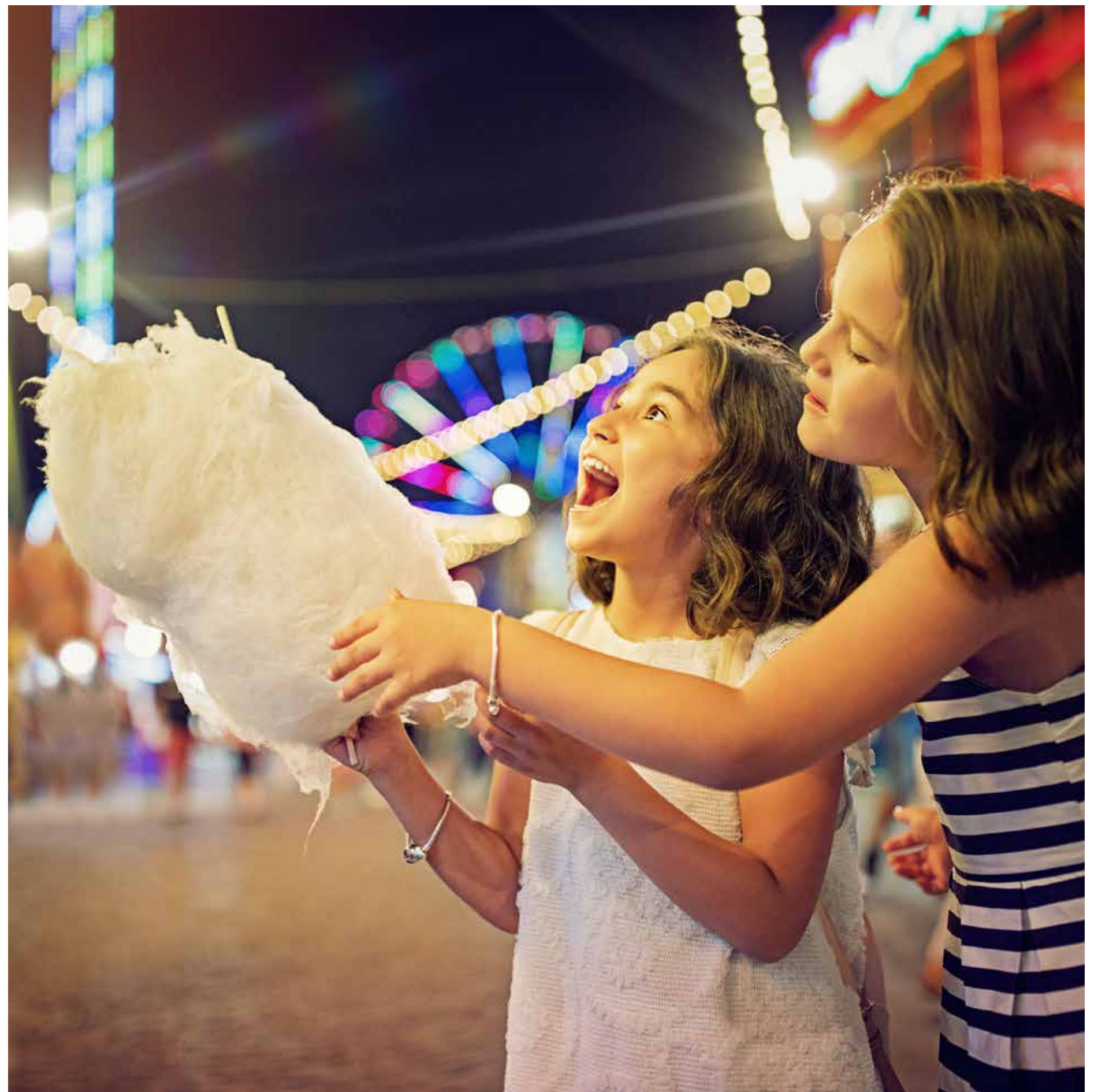


Christmas in Paris



Organized by the Paris Agricultural Society, the annual Paris Fair is the highlight of the events calendar. Held at the beginning of fall every year, the Paris Fair has been operating for over 162 years! It features a variety of live entertainment, livestock shows and competitions, as well as agricultural-based exhibits. The main draw of the evening is a foot-tapping country concert that draws big names from the music world.

Entertainment for the whole family includes the popular 6 Horse Hitch competition, motocross stunts, reptile exhibits, Monster Trucks, Demolition Derbies, and more. Kids of all ages can get their thrills at the midway carnival rides, games, and delicious food.



A Grand Experience

Antiques and more!

Paris is a treasure trove of surprising gift ideas, rare collectibles and artisan giveaways. Browse a variety of antique, furniture, and specialty stores carrying a host of one-of-a-kind items, from exquisite jewellery, walnut furniture, and more. Or treat yourself to the Ah Spa at the Arlington Hotel.

Discover a bygone age in John M. Hall, The House of Quality Linens, where this 120-year-old establishment continues to create fine linen goods across the spectrum. Unearth a beloved classic or a rare volume at Green Heron Books. Place the winning bid on a priceless treasure at the Old Town Hall Auction.

Many stores offer gift packs, curated advice, and restoration services for your own cherished antiques. Step into one of these unique old-world shops and discover a realm of timeless beauty and art.



The Gem Marketplace



Maus Park Ltd. Antiques

The Heart of Paris

Stroll the quaint and charming Grand River Street, where the entire community comes together to shop, dine, and play. Enjoy the one-of-a-kind shops, and antiques in the many marketplaces of Paris and the surrounding area. Enjoy coffee on a patio facing the Grand River or ice cream at The Lookout and watch boats glide by. Admire the unique cobblestone architecture, and discover hidden gems throughout a variety of shops. It's a grand experience you don't want to miss!



Flashback Vintage



Pursuit of Home

The Heart of Paris


RIVERBANK ESTATES
NITH RIVER, PARIS

TO
**MAUS PARK
ANTIQUES**
🚗 12 min.

FLASHBACK VINTAGE
🚗 5 min. 🚶 30 min.

BIRD & BEE VINTAGE
🚗 4 min. 🚶 28 min.

**THE PARIS
WINCEY MILLS CO.**
🚗 4 min. 🚶 28 min.

PIPER & OAK
🚗 4 min. 🚶 32 min.

TOP ART DESIGN
🚗 5 min. 🚶 29 min.

**FROM THE ATTIC
INTERIORS**
🚗 4 min. 🚶 30 min.

**THE GEM
MARKETPLACE**
🚗 4 min. 🚶 32 min.

GREEN HERON BOOKS
🚗 3 min. 🚶 30 min.

**JOHN M HALL
THE HOUSE OF
QUALITY LINENS**
🚗 4 min. 🚶 30 min.

**OLD TOWN HALL
AUCTIONS**
🚗 4 min. 🚶 30 min.

**PARIS ROAD
ANTIQUES**
🚗 7 min.

SIMPLYGRAND
P A R I S

GRAND RIVER ST. N.

WILLOW ST.

WILLOW ST.

KING EDWARD ST.

N



Happiness
can be simple
to find

LOSANIHOMES.COM



Renderings/Exterior Elevations are Artist’s concept only. Construction of dwelling may not be exactly as shown. Some features shown may be optional extras at additional cost. Exterior elevations, renderings or sketches are subject to architectural controls, the availability of materials to the Vendor during the construction of the Dwelling, and site conditions. Some windows shown on side elevations may not be available due to the applicable side yard setback. Accordingly, all details, dimensions, treatments, specifications and features shown may be changed by the Vendor, the Municipality, the Developer or the Vendor's control architect, in their sole and unfettered discretion at any time without notice. Site plan generally depicts a draft plan submitted to the municipality for development approvals. All details, dimensions and features shown on this schedule are intended to display the preliminary lot plan of the lot purchased herein only. The lot and surrounding lots or other features shown on this schedule such as driveway locations, depth measurements and landscaping features are subject to approval by the municipality, the Vendors consulting engineers, and developer. Accordingly the lot, adjacent lots, and all such surrounding features shown on this schedule are subject to change without notice and may differ from this schedule. Aerial photographs were taken from various angles and heights in order to generally illustrate the relative location of the Peninsula site and surrounding features. Renderings are not to scale and may not reflect the actual buildings, businesses and structures in existence at the time of development. Losani Homes makes no representation or warranty with respect to the actual views or locations of such features from the homes once fully constructed. Listed travel times are general in nature and may vary depending upon traffic and personal variables such as fitness and mobility level. E.&O.E. April 25, 2024.